

**FAM 13**  
**FATTY ACID METHYL ESTERS**

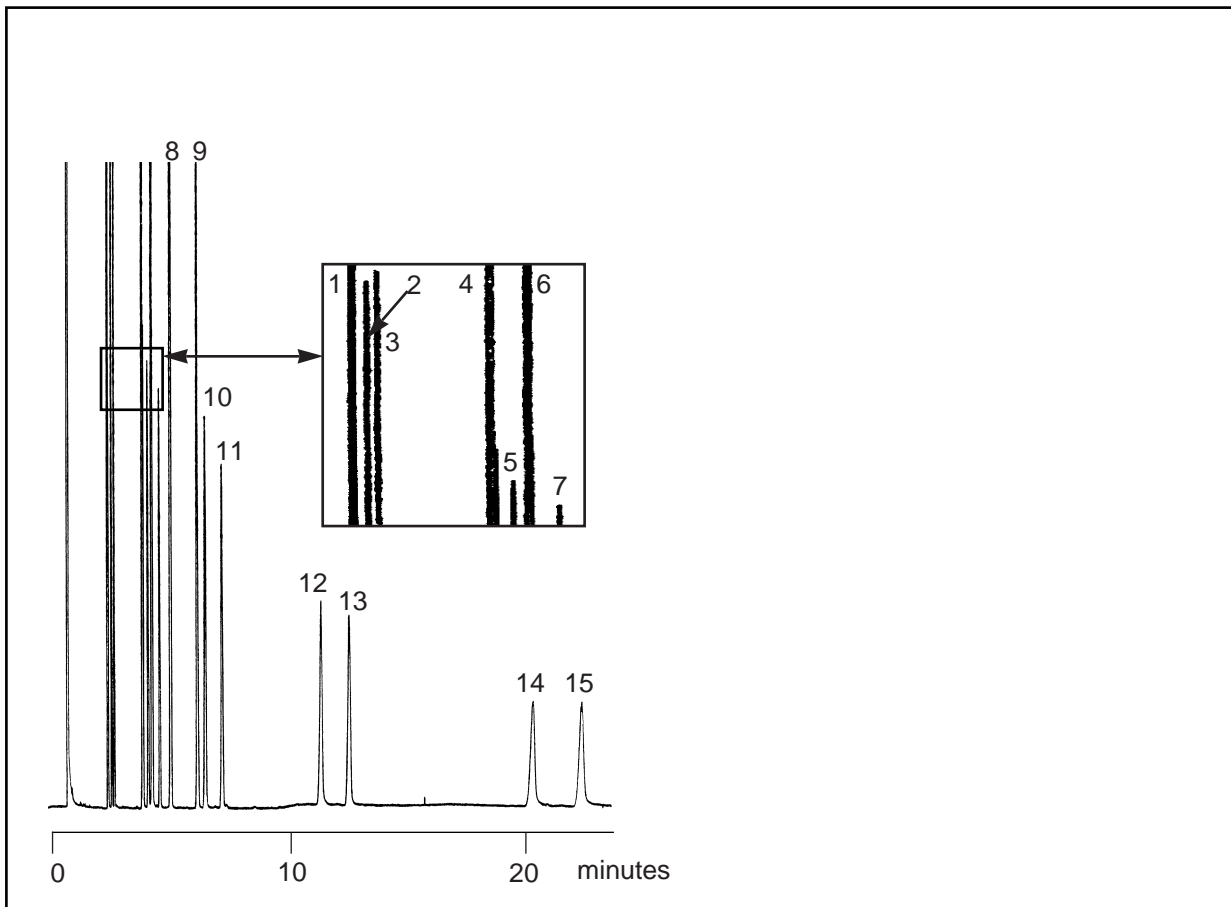
## Analysis of FAME mixture on BPX70

**FAME MIXTURE**

Part No.: 054606  
 Phase: BPX70, 0.25µm film  
 Column: 25m x 0.32mm I.D.  
 Temp.: Isothermal at 170°C  
 Carrier Gas: H<sub>2</sub>, 6 psi  
 Detector: F.I.D.  
 Sensitivity: 32 x10<sup>-12</sup>AFS  
 Injection Mode: Split, 50:1

**Components**

- |                 |                |
|-----------------|----------------|
| 1. 16:0         | 9. 18:3 (cis)  |
| 2. 16:1 (trans) | 10. 20:0       |
| 3. 16:1 (cis)   | 11. 20:1 (cis) |
| 4. 18:0         | 12. 22:0       |
| 5. 18:1 (trans) | 13. 22:1 (cis) |
| 6. 18:1 (cis)   | 14. 24:0       |
| 7. 18:2 (trans) | 15. 24:1 (cis) |
| 8. 18:2 (cis)   |                |



visit [www.sge.com](http://www.sge.com) or contact our technical Customer Support Team on: [techsupport@sge.com](mailto:techsupport@sge.com)

<p><b>SGE International Pty. Ltd.</b>                  email: support@sge.com</p>	<p><b>SGE Incorporated (USA)</b>                  email: usa@sge.com</p>	<p><b>SGE (France) Sarl</b>                  email: france@sge.com</p>	<p><b>SGE Deutschland GmbH</b>                  email: germany@sge.com</p>	<p><b>SGE Japan Inc.</b>                  email: sgejpn@itjit.ne.jp</p>
<p><b>SGE Australia Pty. Ltd.</b>                  email: sales@sge.com</p>	<p><b>SGE Europe Ltd. (UK)</b>                  email: uk@sge.com</p>	<p><b>SGE (Italia) Srl.</b>                  email: sge.italia@tin.it</p>	<p><b>SGE China Service Centre</b>                  email: sge@bj.col.com.cn</p>	<p><b>SGE India</b>                  email: sgeindia@bom4.vsnl.net.in</p>