

FAM 11 FATTY ACID METHYL ESTERS

A range of Fame Isomers on BPX70

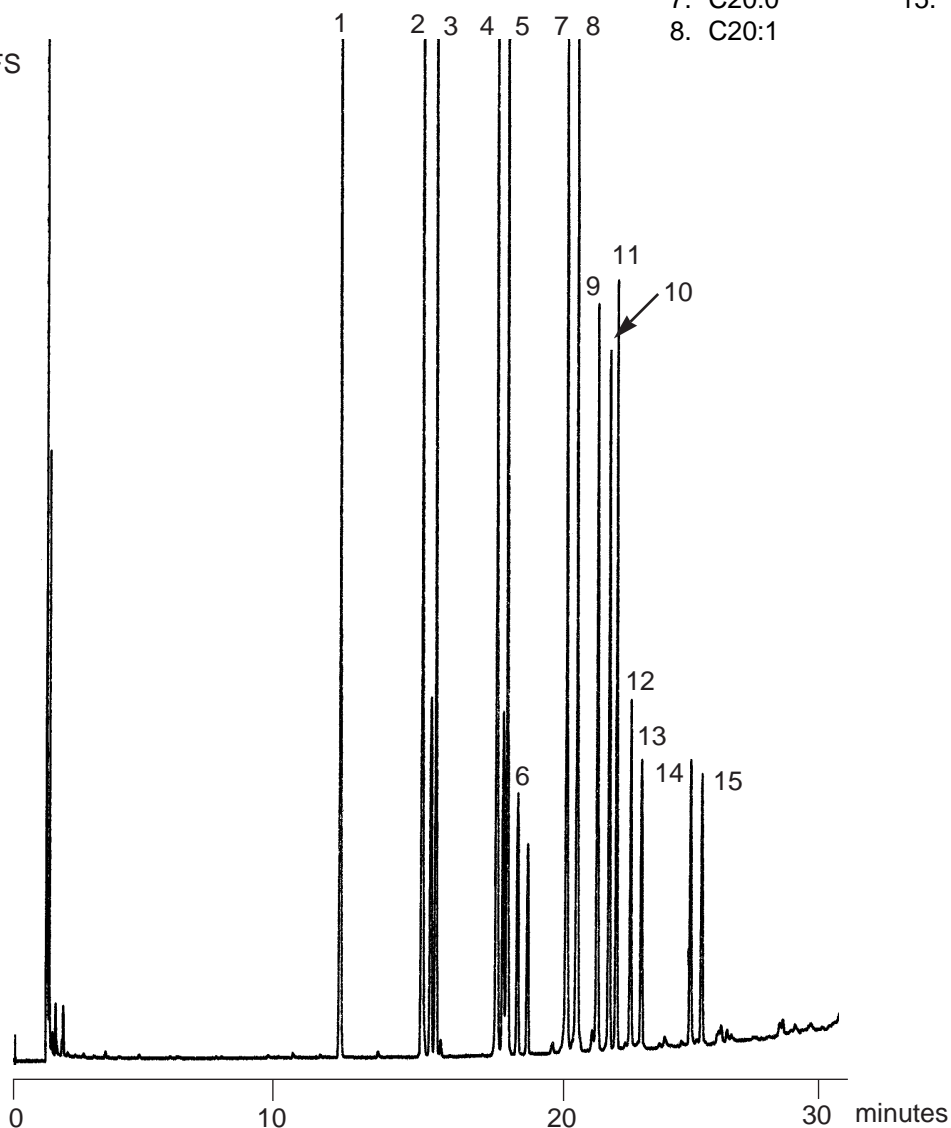
Notes: Even a 0.53mm ID BPX70 provides adequate separation of FAMES by degree of insaturation

A RANGE OF FAME ISOMERS

Part No.: 054610
 Phase: BPX70, 0.5µm film
 Column: 25m x 0.53mm I.D.
 Initial Temp.: 80°C, 0min.
 Program Rate: 5°C/min.
 Final Temp.: 250°C, 0min.
 Carrier Gas: He, 2 psi
 Detector: F.I.D.
 Sensitivity: 32 x10⁻¹²AFS
 Injection Mode: Split, 50:1

Components

- | | |
|----------|-----------|
| 1. C14:0 | 9. C20:2 |
| 2. C16:0 | 10. C20:3 |
| 3. C16:1 | 11. C20:4 |
| 4. C18:0 | 12. C22:0 |
| 5. C18:1 | 13. C22:1 |
| 6. C18:2 | 14. C24:0 |
| 7. C20:0 | 15. C24:1 |
| 8. C20:1 | |



visit www.sge.com or contact our technical Customer Support Team on: techsupport@sge.com

SGE International Pty. Ltd.
email: support@sge.com

SGE Incorporated (USA)
email: usa@sge.com

SGE (France) Sarl
email: france@sge.com

SGE Deutschland GmbH
email: germany@sge.com

SGE Japan Inc.
email: sgejpn@itjit.ne.jp

SGE Australia Pty. Ltd.
email: sales@sge.com

SGE Europe Ltd. (UK)
email: uk@sge.com

SGE (Italia) Srl.
email: sge.italia@tin.it

SGE China Service Centre
email: sge@bj.col.com.cn

SGE India
email: sgeindia@bom4.vsnl.net.in