

FAM 10

FATTY ACID METHYL ESTERS

Analysis of Sugar Alditol Acetates on BPX70

KEYWORDS:

Sugars
Alditol Acetates
Carbohydrates

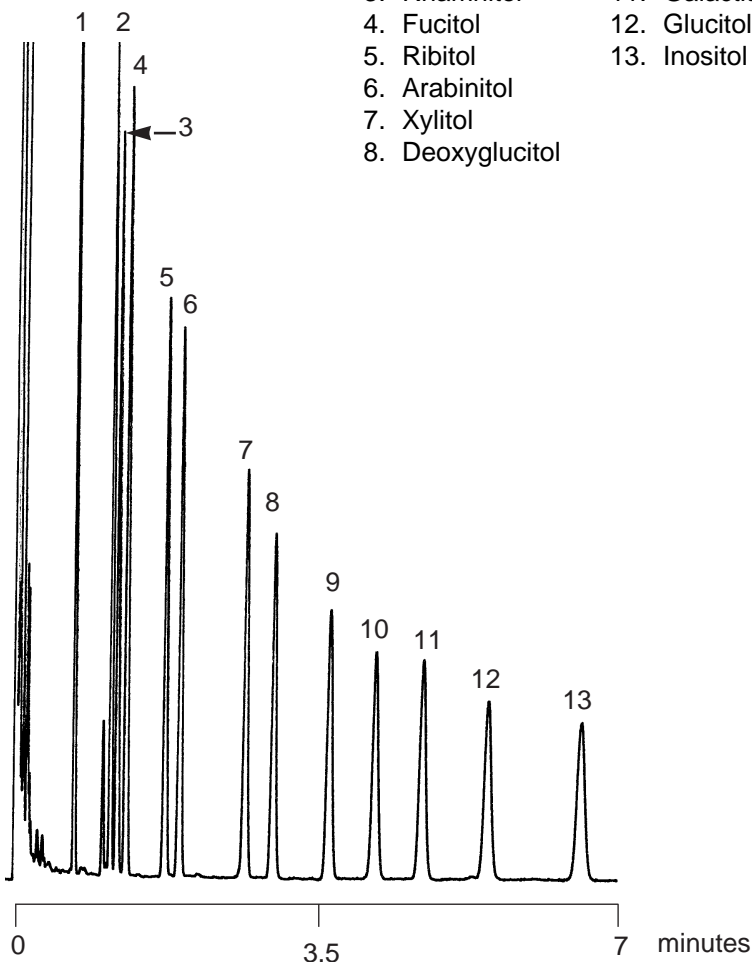
Notes: BPX70 polarity allows rapid analysis of alditol acetates.

ALDITOL ACETATES

Part No.: 054605
Phase: BPX70, 0.25µm film
Column: 12m x 0.32mm I.D.
Temp.: Isothermal at 210°C
Carrier Gas: H₂, 3.3 psi
Detector: F.I.D.
Sensitivity: 16 x10⁻¹²AFS
Injection Mode: Split, 50:1

Components

- | | |
|------------------|----------------|
| 1. Eythritol | 9. Allitol |
| 2. Deoxyribitol | 10. Mannitol |
| 3. Rhamnitol | 11. Galactitol |
| 4. Fucitol | 12. Glucitol |
| 5. Ribitol | 13. Inositol |
| 6. Arabinitol | |
| 7. Xylitol | |
| 8. Deoxyglucitol | |



visit www.sge.com or contact our technical Customer Support Team on: techsupport@sge.com

SGE International Pty. Ltd.
email: support@sge.com

SGE Incorporated (USA)
email: usa@sge.com

SGE (France) Sarl
email: france@sge.com

SGE Deutschland GmbH
email: germany@sge.com

SGE Japan Inc.
email: sgejpn@itjit.ne.jp

SGE Australia Pty. Ltd.
email: sales@sge.com

SGE Europe Ltd. (UK)
email: uk@sge.com

SGE (Italia) Srl.
email: sge.italia@tin.it

SGE China Service Centre
email: sge@bj.col.com.cn

SGE India
email: sgeindia@bom4.vsnl.net.in