

FAM 05

FATTY ACID METHYL ESTERS

Analysis of PUFA-1 Marine Fame on BPX70

KEYWORDS:
MARINE FAME

Notes: Improved separation of peaks 9 and 10.
For more detail of the complete mixture see
FAM 03.

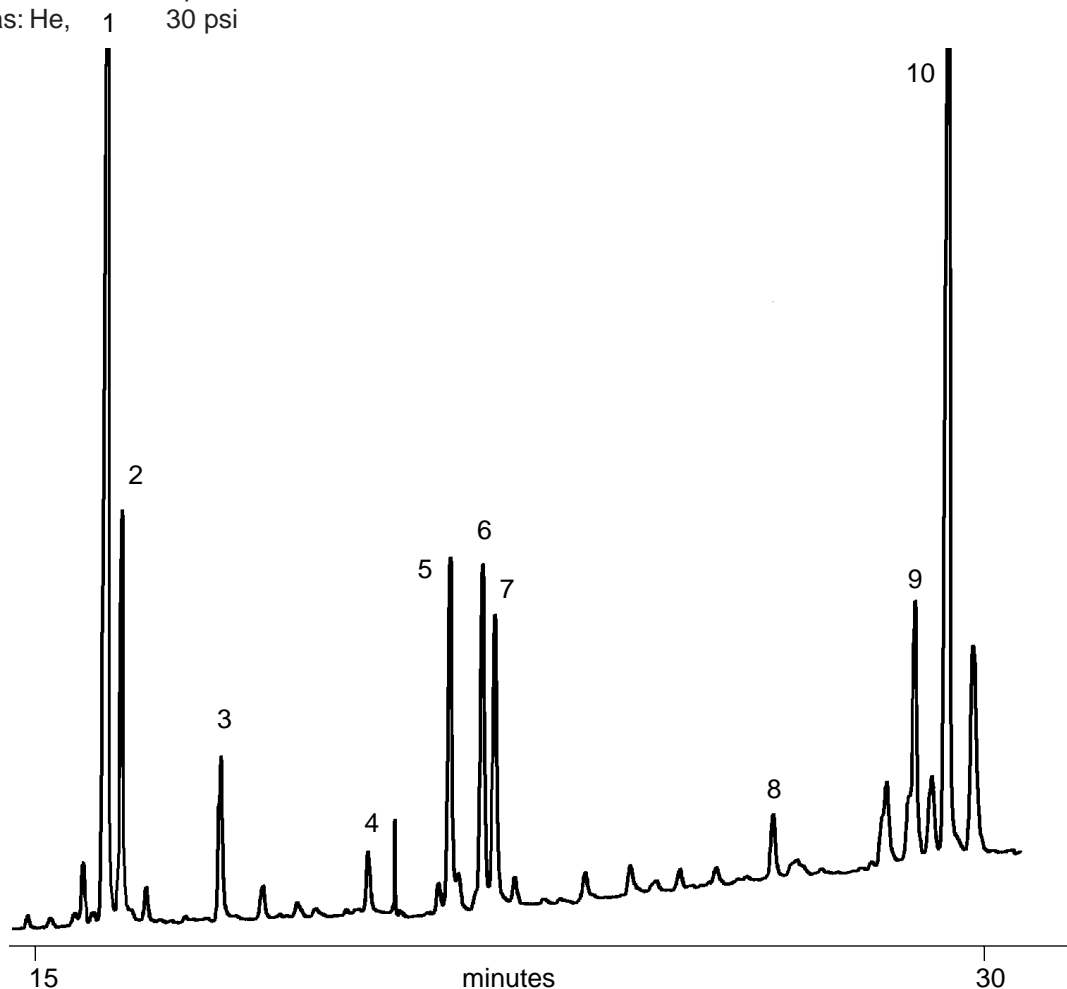
PUFA - 1

PUFA-1 MARINE FAME

Components

Part No.: 054603
Phase: BPX70, 0.25µm
Column: 50m x 0.22mm ID
Initial Temp: 150°C, 0 min
Rate: 2°C/min
Final Temp: 210°C, 5min
Detector: FID 280°C
Sensitivity: 32 x 10⁻¹² AFS
Injection Mode: Split, 50:1
Carrier Gas: He, 30 psi

- | | |
|------------|--------------|
| 1. C18:1n9 | 6. C20:0 |
| 2. C18:1n7 | 7. C20:1n9 |
| 3. C18:2n6 | 8. C20:4n6 |
| 4. C18:3n3 | 9. C20:5n3 |
| 5. C18:4n3 | 10. C22:1n11 |



visit www.sge.com or contact our technical Customer Support Team on: techsupport@sge.com

SGE International Pty. Ltd.
email:support@sge.com

SGE Incorporated (USA)
email:usa@sge.com

SGE (France) Sarl
email:france@sge.com

SGE Deutschland GmbH
email:germany@sge.com

SGE Japan Inc.
email:sgejpn@itjit.ne.jp

SGE Australia Pty. Ltd.
email:sales@sge.com

SGE Europe Ltd. (UK)
email:uk@sge.com

SGE (Italia) Srl.
email:sge.italia@tin.it

SGE China Service Centre
email:sge@bj.col.com.cn

SGE India
email:sgeindia@bom4.vsnl.net.in