

FAM 04
FATTY ACID METHYL ESTERS

Analysis of PUFA-2 Animal Fame on BPX70

KEYWORDS:

PUFA - 2

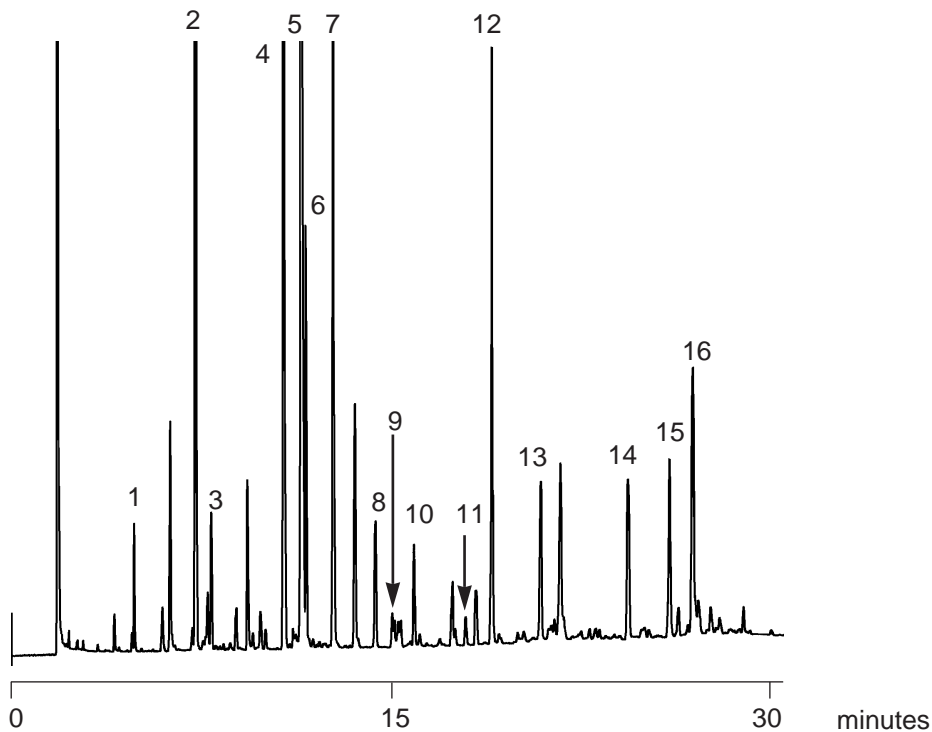
Animal Fame

PUFA-2 ANIMAL FAME

Components

Part No.: 054602
Phase: BPX70, 0.25µm film
Column: 25m x 0.22mm I.D.
Initial Temp.: 150°C, 0min.
Program Rate: 2°C/min.
Final Temp.: 210°C, 5min.
Carrier Gas: He, 15 psi
Detector: F.I.D., 280°C
Sensitivity: 32 x10⁻¹²AFS
Injection Mode: Split, 50:1

- | | |
|------------|--------------|
| 1. C14:0 | 9. C20:0 |
| 2. C16:0 | 10. C20:1n11 |
| 3. C16:1n7 | 11. C20:3n6 |
| 4. C18:0 | 12. C20:4n6 |
| 5. C18:1n9 | 13. C20:5n3 |
| 6. C18:2n7 | 14. C22:4n6 |
| 7. C18:2n6 | 15. C22:5n3 |
| 8. C18:3n3 | 16. C22:6n3 |



visit www.sge.com or contact our technical Customer Support Team on: techsupport@sge.com

SGE International Pty. Ltd.
email: support@sge.com

SGE Incorporated (USA)
email: usa@sge.com

SGE (France) Sarl
email: france@sge.com

SGE Deutschland GmbH
email: germany@sge.com

SGE Japan Inc.
email: sgejpn@itjit.ne.jp

SGE Australia Pty. Ltd.
email: sales@sge.com

SGE Europe Ltd. (UK)
email: uk@sge.com

SGE (Italia) Srl.
email: sge.italia@tin.it

SGE China Service Centre
email: sge@bj.col.com.cn

SGE India
email: sgeindia@bom4.vsnl.net.in