

ENV 77

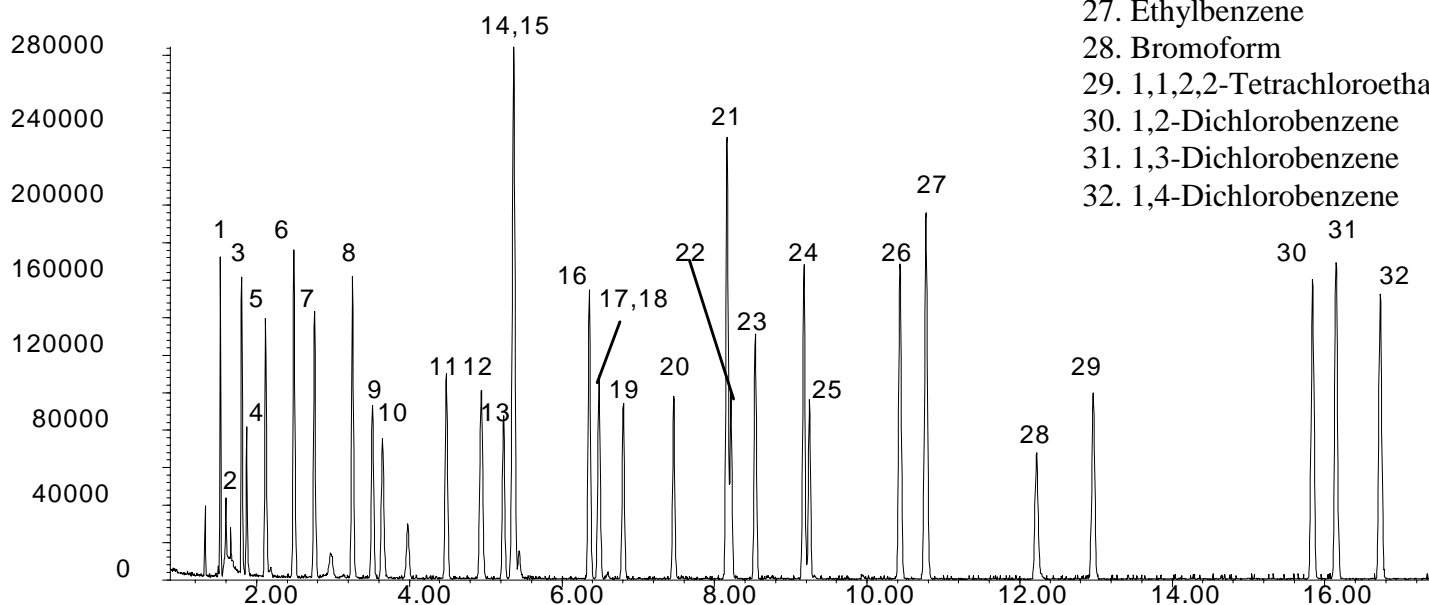
ENVIRONMENTAL

Analysis of US EPA 624 Method on Thick Film BPX5 with ms-NoVent™

Phase: BPX5, 1.0µm film
Sample: 100ppm in Hexane/Toluene
Column: 30m x 0.25 mm ID
Initial Temp: 40°C, 3 min.
Rate 1: 8°C/min to 90°C,
Rate 2: 6°C/min to 200°C
Final Temp: 200°C, 5 min.
Detector Type: Mass Spectrometer
Carrier Gas: He, 25.7 psi
Carrier Gas Flow: 1.8 mL/min.
Constant Flow: On
Average Linear Velocity: 35 cm/sec at 40°C
Injection Mode: Split
Split Ratio: 40:1
Injection Volume: 1 µL
Injection Temperature: 250°C
Autosampler: No
Liner Type: 4 mm ID Single Taper Liner
Liner Part Number: 092017
Column Part Number: 054122
 ms-NoVent™ Part no.: 113400
 HP5973 restrictor: 113409
Full Scan / SIM: Full scan 45-450

Components

1. Chloromethane
2. Chloroethene (Vinyl chloride)
3. Bromomethane
4. Chloroethane
5. Trichlorofluoromethane
6. 1,1-Dichloroethene
7. Methylene chloride
8. 1,2-Dichloroethene
9. 1,1,-dichloroethane
10. 1,2,-Dimethoxy ethane
11. Chloroform
12. 1,1,1,-Trichloroethane
13. 1,2-Dichloroethane
14. Carbon tetrachloride
15. Benzene
16. Trichloroethene
17. 1,2-Dichloropropane
18. 2-Chloroethylvinyl ether
19. Bromodichloromethane
20. 1,3-dichloroprop-1-ene
21. Toluene
22. 1,3-dichloroprop-1-ene
23. 1,1,2-Trichloroethane
24. Tetrachloroethene
25. Dibromochloromethane
26. Chlorobenzene
27. Ethylbenzene
28. Bromoform
29. 1,1,2,2-Tetrachloroethane
30. 1,2-Dichlorobenzene
31. 1,3-Dichlorobenzene
32. 1,4-Dichlorobenzene



visit www.sge.com or contact our technical Customer Support Team on: techsupport@sge.com

SGE International Pty. Ltd.
email:support@sge.com

SGE Incorporated (USA)
email:usa@sge.com

SGE (France) Sarl
email:france@sge.com

SGE Deutschland GmbH
email:germany@sge.com

SGE Japan Inc.
email:sgejpn@itjit.ne.jp

SGE Australia Pty. Ltd.
email:sales@sge.com

SGE Europe Ltd. (UK)
email:uk@sge.com

SGE (Italia) Srl.
email:sge.italia@tin.it

SGE China Service Centre
email:sge@bj.col.com.cn

SGE India
email:sgeindia@bom4.vsnl.net.in