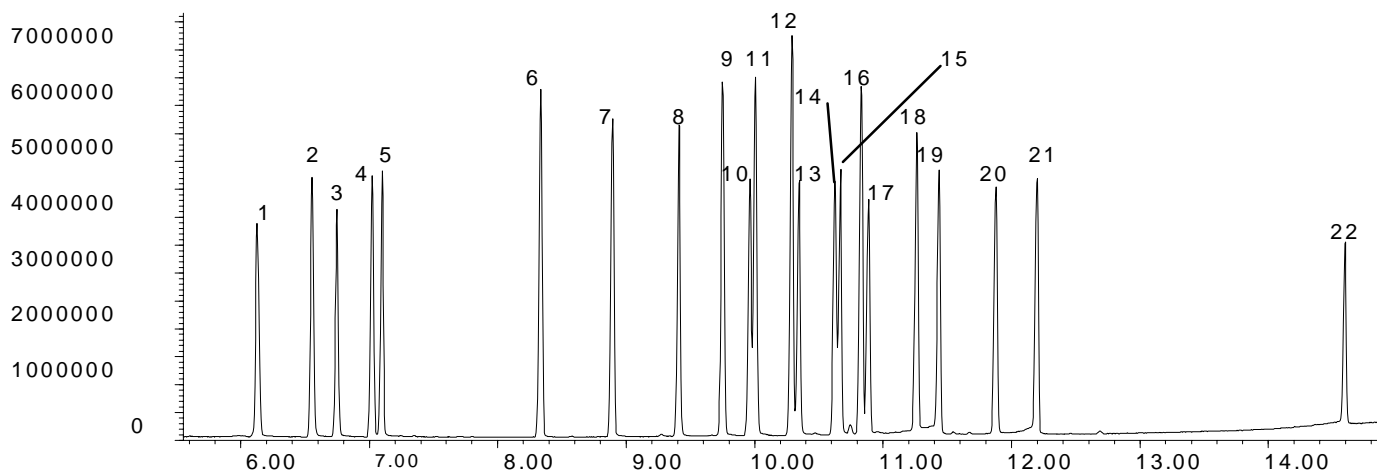


Phase: SolGel-1, 0.25µm film
Sample: 100ppm in Dichloromethane
Column: 30m x 0.25 mm ID
Initial Temp: 110°C, 1 min.
Rate 1: 25°C/min to 150°C,
Rate 2: 12°C/min to 260°C
Rate 3: 15°C/min to 300°C
Final Temp: 300°C, 5 min.
Detector Type: Mass Spectrometer
Carrier Gas: He, 31.6 psi
Carrier Gas Flow: 1.7 mL/min.
Constant Flow: On
Average Linear Velocity: 35 cm/sec at 110°C
Injection Mode: Splitless
Purge on Time: 0.5 min.
Purge on (Split) Vent Flow: 60
Injection Volume: 1 µL
Injection Temperature: 250°C
Autosampler: No
Liner Type: 4 mm ID Single Taper Liner
Liner Part Number: 092017
Column Part Number: 054795
ms-NoVent™ Part no.: 113400
HP5973 restrictor: 113409
Full Scan / SIM: Full scan 40-500

Components

1. 2,4,5,6-Tetrachloro-meta-xylene
2. α-BHC
3. β-BHC
4. γ-BHC
5. δ-BHC
6. Heptachlor
7. Aldrin
8. Heptachloepoxy
9. trans-Chlordane
10. Endosulfan A
11. cis-Chlordane
12. pp-DDE
13. Dieldrin
14. Endrin
15. Endosulfan B
16. pp-DDD
17. Endrin aldehyde
18. Endosulfan sulfate
19. pp-DDT
20. Endrin Ketone
21. Methoxychlor
22. Decachlorobiphenyl



visit www.sge.com or contact our technical Customer Support Team on: techsupport@sge.com

SGE International Pty. Ltd.
email:support@sge.com

SGE Incorporated (USA)
email:usa@sge.com

SGE (France) Sarl
email:france@sge.com

SGE Deutschland GmbH
email:germany@sge.com

SGE Japan Inc.
email:sgejpn@itjit.ne.jp

SGE Australia Pty. Ltd.
email:sales@sge.com

SGE Europe Ltd. (UK)
email:uk@sge.com

SGE (Italia) Srl.
email:sge.italia@tin.it

SGE China Service Centre
email:sge@bj.col.com.cn

SGE India
email:sgeindia@bom4.vsnl.net.in