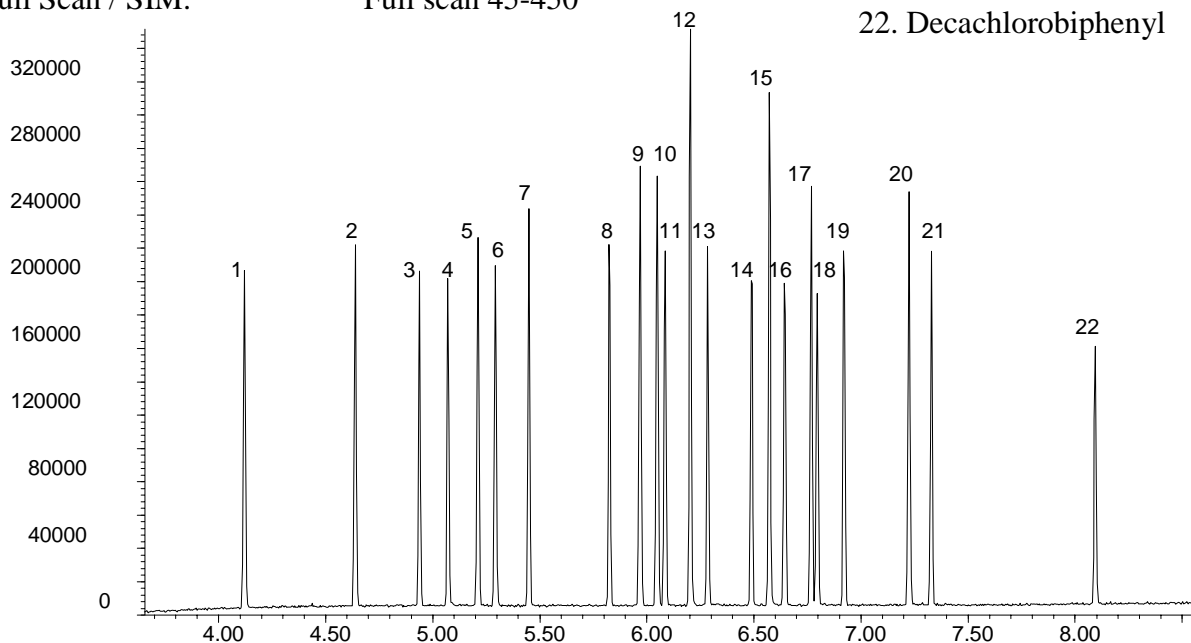


Phase: BPX35, 0.1µm film
Sample: 100ppm in dichloromethane
Column: 10m x 0.1 mm ID
Initial Temp: 110°C, 1 min.
Rate 1: 30°C/min to 320°C,
Final Temp: 320°C, 5 min.
Detector Type: MSD
Carrier Gas: He, 50.3 psi
Carrier Gas Flow: 0.4 mL/min.
Constant Flow: On
Average Linear Velocity: 35 cm/sec at 110°C
Injection Mode: Split
Split Ratio: 100:1.
Injection Volume: 1 µL
Injection Temperature: 250°C
Autosampler: No
Liner Type: 4 mm ID Double Taper Liner
Liner Part Number: 092018
Column Part Number: 054699
ms-NoVent™ Part no.: 113400
HP5973 restrictor: 113409
Full Scan / SIM: Full scan 45-450

Components

1. 2,4,5,6-tetrachloro-meta-xylene
2. α-BHC
3. γ-BHC
4. β-BHC
5. Heptachlor
6. δ-BHC
7. Aldrin
8. Heptachlorepoxo
9. trans-Chlordane
10. cis-Chlordane
11. Endosulfan A
12. p,p-DDE
13. Dieldrin
14. Endrin
15. p,p-DDD
16. Endosulfan B
17. p,p-DDT
18. Endrin aldehyde
19. Endosulfan sulfate
20. Methoxychlor
21. Endrin ketone
22. Decachlorobiphenyl



visit www.sge.com or contact our technical Customer Support Team on: techsupport@sge.com

SGE International Pty. Ltd. email:support@sge.com	SGE Incorporated (USA) email:usa@sge.com	SGE (France) Sarl email:france@sge.com	SGE Deutschland GmbH email:germany@sge.com	SGE Japan Inc. email:sgejpn@itjit.ne.jp
SGE Australia Pty. Ltd. email:sales@sge.com	SGE Europe Ltd. (UK) email:uk@sge.com	SGE (Italia) Srl. email:sge.italia@tin.it	SGE China Service Centre email:sge@bj.col.com.cn	SGE India email:sgeindia@bom4.vsnl.net.in