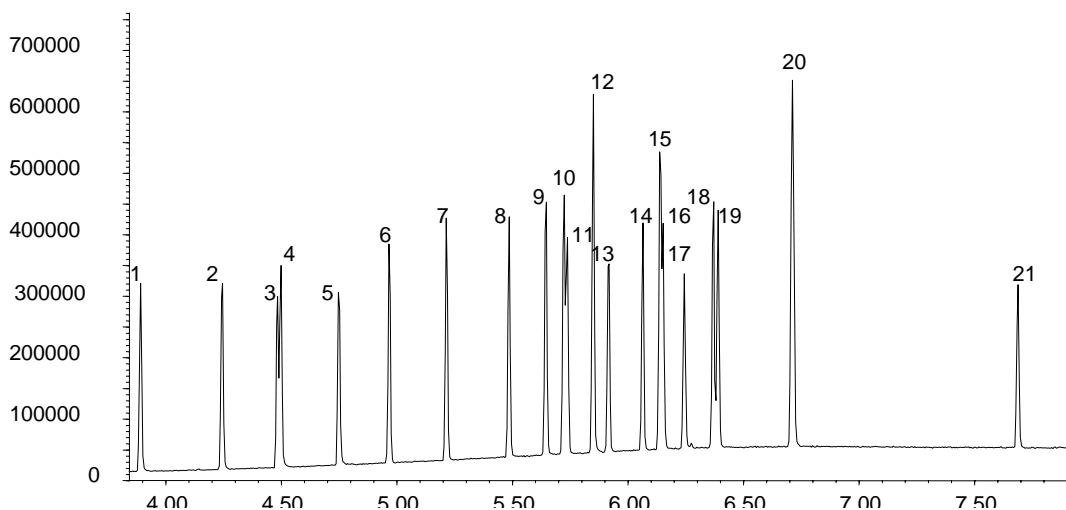


Phase: BPX5, 0.1µm film
Sample: 200ppm in dichloromethane
Column: 10m x 0.1 mm ID
Initial Temp: 110°C, 1 min.
Rate 1: 30°C/min to 320°C,
Final Temp: 320°C, 5 min.
Detector Type: MSD
Carrier Gas: He, 50.3 psi
Carrier Gas Flow: 0.4 mL/min.
Constant Flow: On
Average Linear Velocity: 35 cm/sec at 110°C
Injection Mode: Split
Split Ratio: 100:1.
Injection Volume: 1 µL
Injection Temperature: 250°C
Autosampler: No
Liner Type: 4 mm ID Double Taper Liner
Liner Part Number: 092018
Column Part Number: 054099
ms-NoVent™ Part no.: 113400
HP5973 restrictor: 113409

Components

1. 2,4,5,6-Tetrachloro-meta-xylene (Surrogate)
2. α-BHC
3. β-BHC
4. γ-BHC
5. δ-BHC
6. Heptachlor
7. Aldrin
8. Heptachlor epoxide
9. trans-Chlordane
10. cis-Chlordane
11. Endosulfan A
12. p,p'-DDE
13. Dieldrin
14. Endrin
15. p,p'-DDD
16. Endosulfan B
17. Endrin aldehyde
18. p,p'-DDT
19. Endosulfan sulfate
20. Methoxychlor
21. Decachlorobiphenyl (Surrogate)



visit www.sge.com or contact our technical Customer Support Team on: techsupport@sge.com

SGE International Pty. Ltd.
email: support@sge.com

SGE Incorporated (USA)
email: usa@sge.com

SGE (France) Sarl
email: france@sge.com

SGE Deutschland GmbH
email: germany@sge.com

SGE Japan Inc.
email: sgejpn@itjit.ne.jp

SGE Australia Pty. Ltd.
email: sales@sge.com

SGE Europe Ltd. (UK)
email: uk@sge.com

SGE (Italia) Srl.
email: sge.italia@tin.it

SGE China Service Centre
email: sge@bj.col.com.cn

SGE India
email: sgeindia@bom4.vsnl.net.in