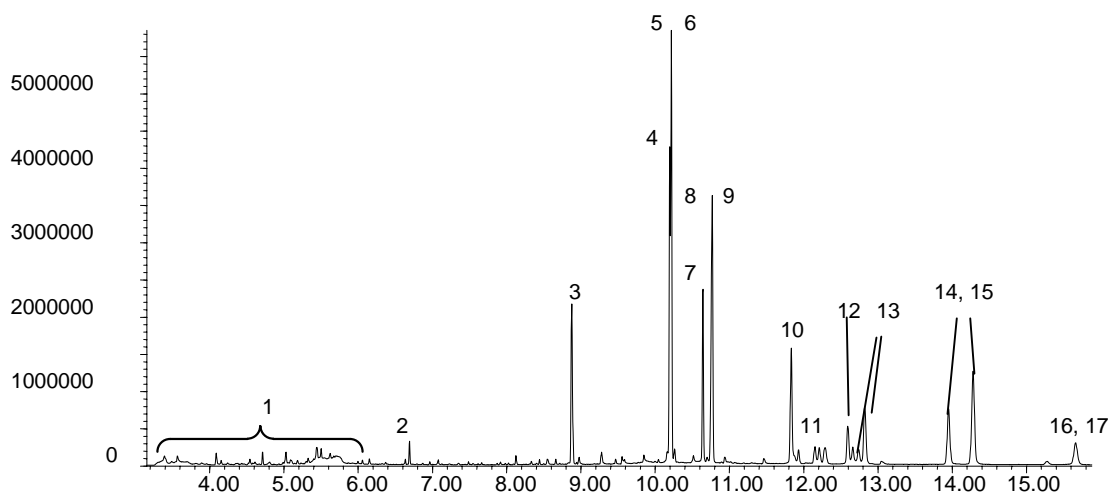


Components

Phase: BPX50, 0.25µm film
16 Pyrethroids: 10ppm in methanol
Column: 30m x 0.25 mm ID
Initial Temp: 50°C, 1 min.
Rate 1: 30°C/min to 200°C,
Rate 2: 4°C/min to 300°C
Final Temp: 300°C, 5 min.
Detector Type: MSD
Carrier Gas: He, 6.8 psi
Carrier Gas Flow: 1.0 mL/min.
Constant Flow: On
Average Linear Velocity: 36 cm/sec at 50°C
Injection Mode: Splitless
Purge on Time: 0.5 min.
Purge on (Split) Vent Flow: 60mL/min.
Injection Volume: 1 µL
Injection Temperature: 250°C
Autosampler: No
Liner Type: 4 mm ID Double Taper Liner
Liner Part Number: 092018
Column Part Number: 054751

1. Natural Pyrethrums
2. BHT
3. Allethrin
4. Bifenthrin
5. Bioresmethrin
6. Resmethrin
7. Fenpropathrin
8. Sumithrin
9. Tetramethrin
10. Permethrin
11. Cyfluthrin
12. Flucythrinate
13. Cypermethrin
14. Esfenvalerate
15. Fenvalerate
16. Tralomethrin
17. Deltamethrin



visit www.sge.com or contact our technical Customer Support Team on: techsupport@sge.com

SGE International Pty. Ltd.
email:support@sge.com

SGE Incorporated (USA)
email:usa@sge.com

SGE (France) Sarl
email:france@sge.com

SGE Deutschland GmbH
email:germany@sge.com

SGE Japan Inc.
email:sgejpn@itjit.ne.jp

SGE Australia Pty. Ltd.
email:sales@sge.com

SGE Europe Ltd. (UK)
email:uk@sge.com

SGE (Italia) Srl.
email:sge.italia@tin.it

SGE China Service Centre
email:sge@bj.col.com.cn

SGE India
email:sgeindia@bom4.vsnl.net.in