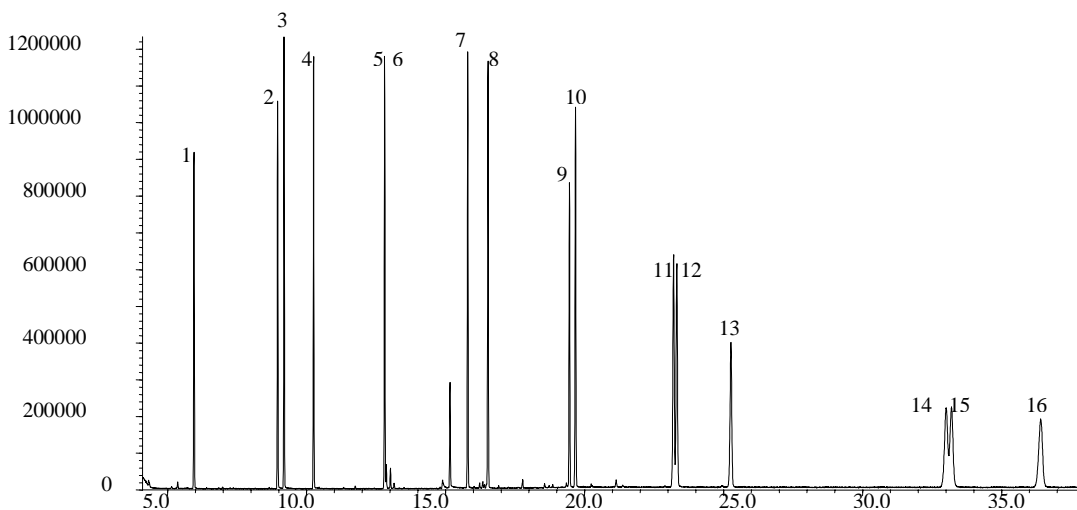


Phase	BPX50, 0.25µm film	1. Naphthalene
(PAH) standard	10 ng/µl in dichloromethane	2. Acenaphthylene
Column	30 m x 0.25 mm ID	3. Acenaphthene
Initial Temp.	65°C, 0.5 min.	4. Fluorene
Rate 1.	25°C/min to 140°C	5. Phenanthrene
Rate 2.	10°C/min to 325°C	6. Anthracene
Final Temp	325°C, 15 min.	7. Fluoranthene
Detector Type	MSD	8. Pyrene
Carrier Gas.	Helium, 9.7 psi	9. Benzo(a)anthracene
Carrier Gas Flow	1. 1mL/min	10. Chrysene
Constant Flow	On	11. Benzo(b)fluoranthene
Average Linear Velocity	39cm/sec at 65°C	12. Benzo(k)fluoranthene
Mode of Injection	Splitless	13. Benzo(a)pyrene
Purge on Time	0.5 min.	14. Indeno(1,2,3-c,d)pyrene
Purge on (Split) Vent Flow	60 mL/min	15. Dibenzo(a,h)anthracene
Injection Volume	0.2 µL	16. Benzo(g,h,i)perylene
Injection Temp.	250°C	
Autosampler	No	
Liner Type	4mm ID Double Taper	
Liner Part Number:	092018	
Column Part Number:	054751	



visit www.sge.com or contact our technical Customer Support Team on: techsupport@sge.com

SGE International Pty. Ltd.
email:support@sge.com

SGE Incorporated (USA)
email:usa@sge.com

SGE (France) Sarl
email:france@sge.com

SGE Deutschland GmbH
email:germany@sge.com

SGE Japan Inc.
email:sgejpn@itjit.ne.jp

SGE Australia Pty. Ltd.
email:sales@sge.com

SGE Europe Ltd. (UK)
email:uk@sge.com

SGE (Italia) Srl.
email:sge.italia@tin.it

SGE China Service Centre
email:sge@bj.col.com.cn

SGE India
email:sgeindia@bom4.vsnl.net.in