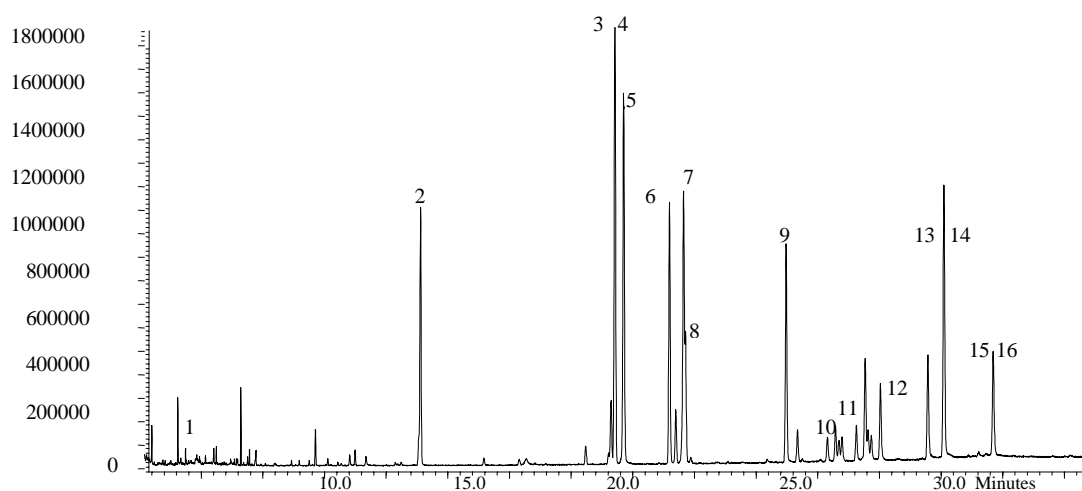


**Phase:** BPX35 0.25µm film  
**16 Pyrethroids:** 10ppm in methanol  
**Column:** 30m x 0.25 mm ID  
**Initial Temp:** 50°C, 1 min.  
**Rate 1:** 30°C/min to 200°C,  
**Rate 2:** 4°C/min to 300°C  
**Final Temp:** 300°C, 5 min.  
**Detector Type:** MSD  
**Carrier Gas:** He, 6.8 psi  
**Carrier Gas Flow:** 0.9 mL/min.  
**Constant Flow:** On  
**Average Linear Velocity:** 35 cm/sec at 50°C  
**Injection Mode:** Splitless  
**Purge on Time:** 0.5 min.  
**Purge on (Split) Vent Flow:** 60mL/min.  
**Injection Volume:** 1 µL  
**Injection Temperature:** 250°C  
**Autosampler:** No  
**Liner Type:** 4 mm ID Double Taper Liner  
**Liner Part Number:** 092018  
**Column Part Number:** 054701

### Components

1. Natural Pyrethrums
2. Allethrin
3. Bioresmethrin
4. Resmethrin
5. Bifenthrin
6. Fenpropathrin
7. Tetramethrin
8. Sumithrin
9. Permethrin
10. Cyflurthin
11. Cypermethrin
12. Flucythrinate
13. Fenvalerate
14. Esfenvalerate
15. Tralomethrin
16. Deltamethrin



visit [www.sge.com](http://www.sge.com) or contact our technical Customer Support Team on: [techsupport@sge.com](mailto:techsupport@sge.com)

SGE International Pty. Ltd.  
email:support@sge.com

SGE Incorporated (USA)  
email:usa@sge.com

SGE (France) Sarl  
email:france@sge.com

SGE Deutschland GmbH  
email:germany@sge.com

SGE Japan Inc.  
email:sgejpn@itjit.ne.jp

SGE Australia Pty. Ltd.  
email:sales@sge.com

SGE Europe Ltd. (UK)  
email:uk@sge.com

SGE (Italia) Srl.  
email:sge.italia@tin.it

SGE China Service Centre  
email:sge@bj.col.com.cn

SGE India  
email:sgeindia@bom4.vsnl.net.in