

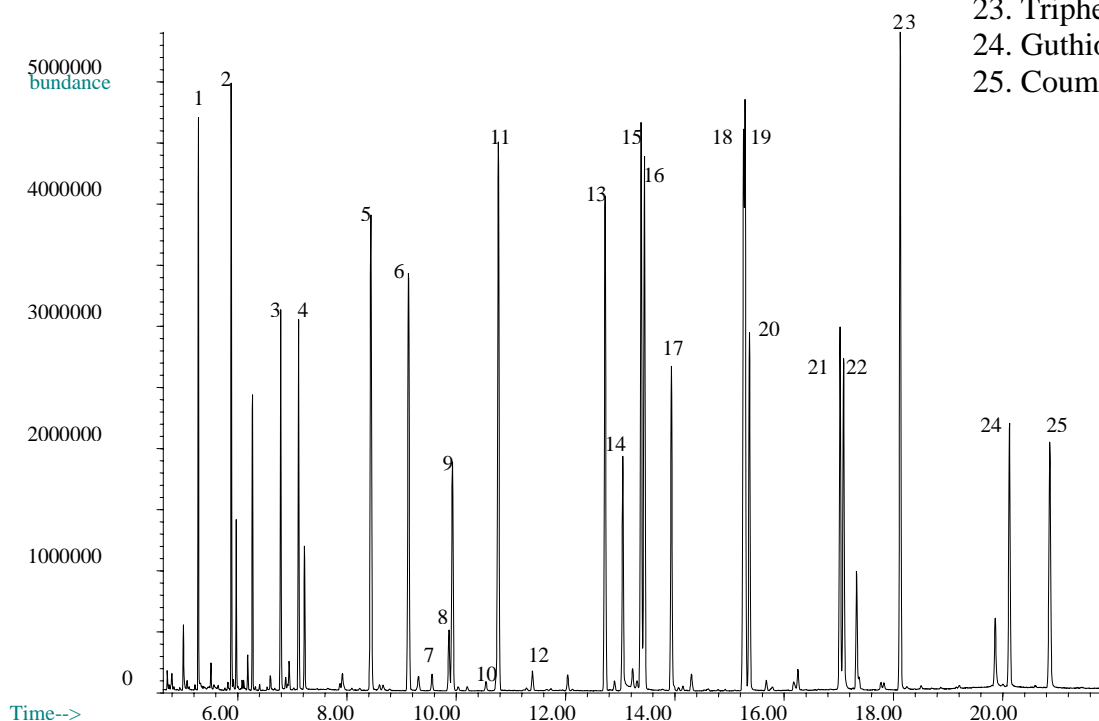
ENV 58

ENVIRONMENTAL

8141 Organophosphorous Pesticide Mix on BPX35

Phase: BPX35 0.25µm film
8141 Standard: 10 ng/µL in dichloromethane
Column: 30m x 0.25 mm ID
Initial Temp: 50°C, 1 min.
Rate 1: 30°C to 190°C, 3 min.
Rate 2: 10°C to 300°C
Final Temp: 300°C, 5 min.
Detector Type: MSD
Carrier Gas: He, 10.8psi
Carrier Gas Flow: 1.3 mL/min.
Constant Flow: On
Average Linear Velocity: 42 cm/sec at 50°C
Injection Mode: Splitless
Purge on Time: 0.5 min.
Purge on (Split) Vent Flow: 60mL/min.
Injection Volume: 1 µL
Injection Temperature: 250°C
Autosampler: No
Liner Type: 4 mm ID Double Taper Liner
Liner Part Number: 092018
Column Part Number: 054701

1. 4-chloro-3-nitrobenzotrifluoride
2. Dichlorvos
3. 1-bromo-2-nitrobenzene
4. α-Mevinphos
5. Tributylphoshate
6. Ethoprop
7. Sulfotepp
8. Naled
9. Phorate
10. Demeton
11. Diazinon
12. Disulfoton
13. Ronnel
14. Methyl Parathion
15. Chlorpyrifos
16. Trichlorinate
17. Fenthion
18. Tetrachlorvinphos
19. Tokuthion
20. Impurity
21. Impurity
22. Fensulfothion
23. Triphenylphosphate
24. Guthion (Azinophos)
25. Coumaphos



visit www.sge.com or contact our technical Customer Support Team on: techsupport@sge.com

SGE International Pty. Ltd.
email:support@sge.com

SGE Incorporated (USA)
email:usa@sge.com

SGE (France) Sarl
email:france@sge.com

SGE Deutschland GmbH
email:germany@sge.com

SGE Japan Inc.
email:sgejpn@itjit.ne.jp

SGE Australia Pty. Ltd.
email:sales@sge.com

SGE Europe Ltd. (UK)
email:uk@sge.com

SGE (Italia) Srl.
email:sge.italia@tin.it

SGE China Service Centre
email:sge@bj.col.com.cn

SGE India
email:sgeindia@bom4.vsnl.net.in