

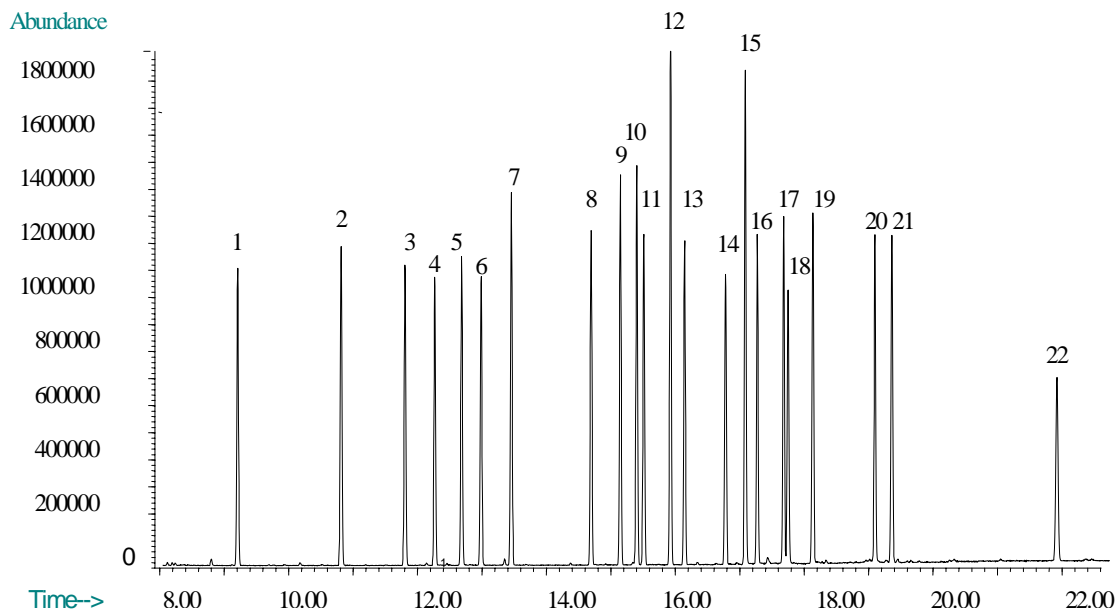
ENV 57

ENVIRONMENTAL

8081 Organochlorine Pesticide Mix on BPX35

Phase: BPX35 0.25 μ m film
8081 Standard: 10 ng/ μ L in dichloromethane
Column: 30m x 0.25 mm ID
Initial Temp: 40°C, 1 min.
Rate 1: 30°C to 190°C, 3 min.
Rate 2: 10°C to 300°C
Final Temp: 300°C, 5 min.
Detector Type: MSD
Carrier Gas: He, 10.0psi
Carrier Gas Flow: 1.3 mL/min.
Constant Flow: On
Average Linear Velocity: 36 cm/sec at 40°C
Injection Mode: Splitless
Purge on Time: 1 min.
Purge on (Split) Vent Flow: 60mL/min.
Injection Volume: 1 μ L
Injection Temperature: 250°C
Autosampler: No
Liner Type: 4 mm ID Double Taper Liner
Liner Part Number: 092018
Column Part Number: 054701

1. 2,4,5,6-tetrachloro-meta-xylene
2. -BHC
3. γ -BHC
4. β -BHC
5. Heptachlor
6. δ -BHC
7. Aldrin
8. Heptachlorepoxy
9. trans-Chlordane
10. cis-Chlordane
11. Endosulfan A
12. DDE
13. Dieldrin
14. Endrin
15. DDD
16. Endosulfan B
17. DDT
18. Endrin Aldehyde
19. Endosulfan Sulfate
20. Methoxychlor
21. Endrin Ketone
22. Decachlorobiphenyl



visit www.sge.com or contact our technical Customer Support Team on: techsupport@sge.com

SGE International Pty. Ltd.
email: support@sge.com

SGE Incorporated (USA)
email: usa@sge.com

SGE (France) Sarl
email: france@sge.com

SGE Deutschland GmbH
email: germany@sge.com

SGE Japan Inc.
email: sgejpn@itjit.ne.jp

SGE Australia Pty. Ltd.
email: sales@sge.com

SGE Europe Ltd. (UK)
email: uk@sge.com

SGE (Italia) Srl.
email: sge.italia@tin.it

SGE China Service Centre
email: sge@bj.col.com.cn

SGE India
email: sgeindia@bom4.vsnl.net.in