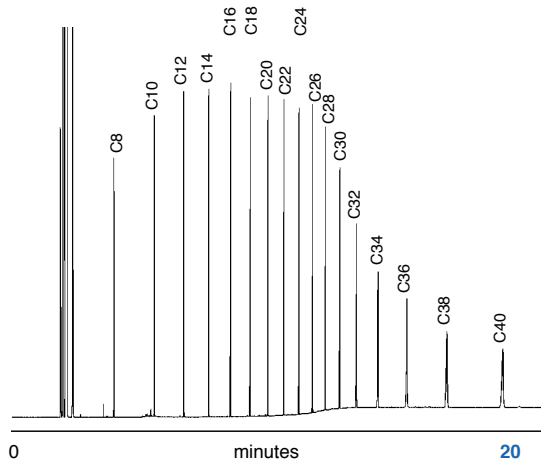


NORMAL

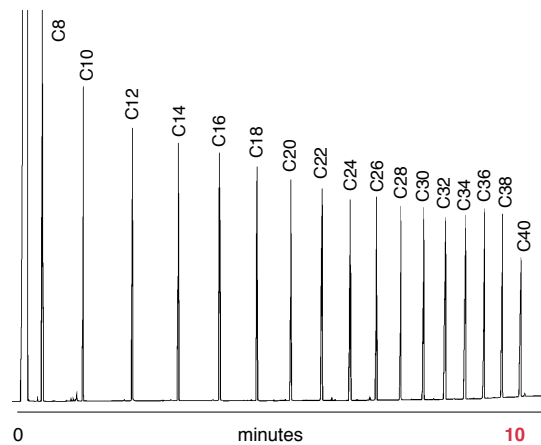
Chromatogram showing separation of Total Recoverable Petroleum Hydrocarbons using a conventional 30 meter x 0.25mm ID BPX5 column with a 0.25 micron film.



Phase: BPX5, 0.25 μ m film
TRPH (C₈-C₄₀): 5 ng/ μ L in dichloromethane
Column: 30m x 0.25mm ID
Initial Temp: 40°C, 2min
Rate 1: 30°C/min to 330°C
Rate 2: N/A
Final Temp: 330°C, 9min
Detector Type: FID, 350°C
Carrier Gas: He, 14.1psi
Carrier Gas Flow : 1.29mL/min
Constant Flow: On
Average Linear Velocity: 40cm/sec at 40°C
Injection Mode: Split, 120:1
Purge On Time: N/A
Purge On (Split) Vent Flow: 160mL/min
Injection Volume: 1 μ L
Injection Temperature: 250°C
Autosampler: Yes
Liner Type : 4mm ID FocusLiner™ with single taper
Liner Part Number: 092003
Column Part Number: 054101

FAST

Chromatogram showing separation of Total Recoverable Petroleum Hydrocarbon using a FAST BPX5 column.



Phase: BPX5, 0.10 μ m film
TRPH (C₈-C₄₀) Standard: 5 ng/ μ L in dichloromethane
Column: 10m x 0.10mm ID
Initial Temp: 40°C, 1min
Rate 1: 30°C/min to 330°C
Rate 2: N/A
Final Temp: 330°C, 0min
Detector Type: FID, 350°C
Carrier Gas: He, 28psi
Carrier Gas Flow : 0.52mL/min
Constant Flow: On
Average Linear Velocity: 55cm/sec at 40°C
Injection Mode: Split, 120:1
Purge On Time: N/A
Purge On (Split) Vent Flow: 62mL/min
Injection Volume: 1 μ L
Injection Temperature: 250°C
Autosampler: Yes
Liner Type : 2.3mm ID FocusLiner™
Liner Part Number: 092005
Column Part Number: 054099

visit www.sge.com or contact our technical Customer Support Team on: techsupport@sge.com

SGE International Pty. Ltd.
email:support@sge.com

SGE Incorporated (USA)
email:usa@sge.com

SGE (France) Sarl
email:france@sge.com

SGE Deutschland GmbH
email:germany@sge.com

SGE Japan Inc.
email:sgejpn@itjit.ne.jp

SGE Australia Pty. Ltd.
email:sales@sge.com

SGE Europe Ltd. (UK)
email:uk@sge.com

SGE (Italia) Srl.
email:sge.italia@tin.it

SGE China Service Centre
email:sge@bj.col.com.cn

SGE India
email:sgeindia@bom4.vsnl.net.in