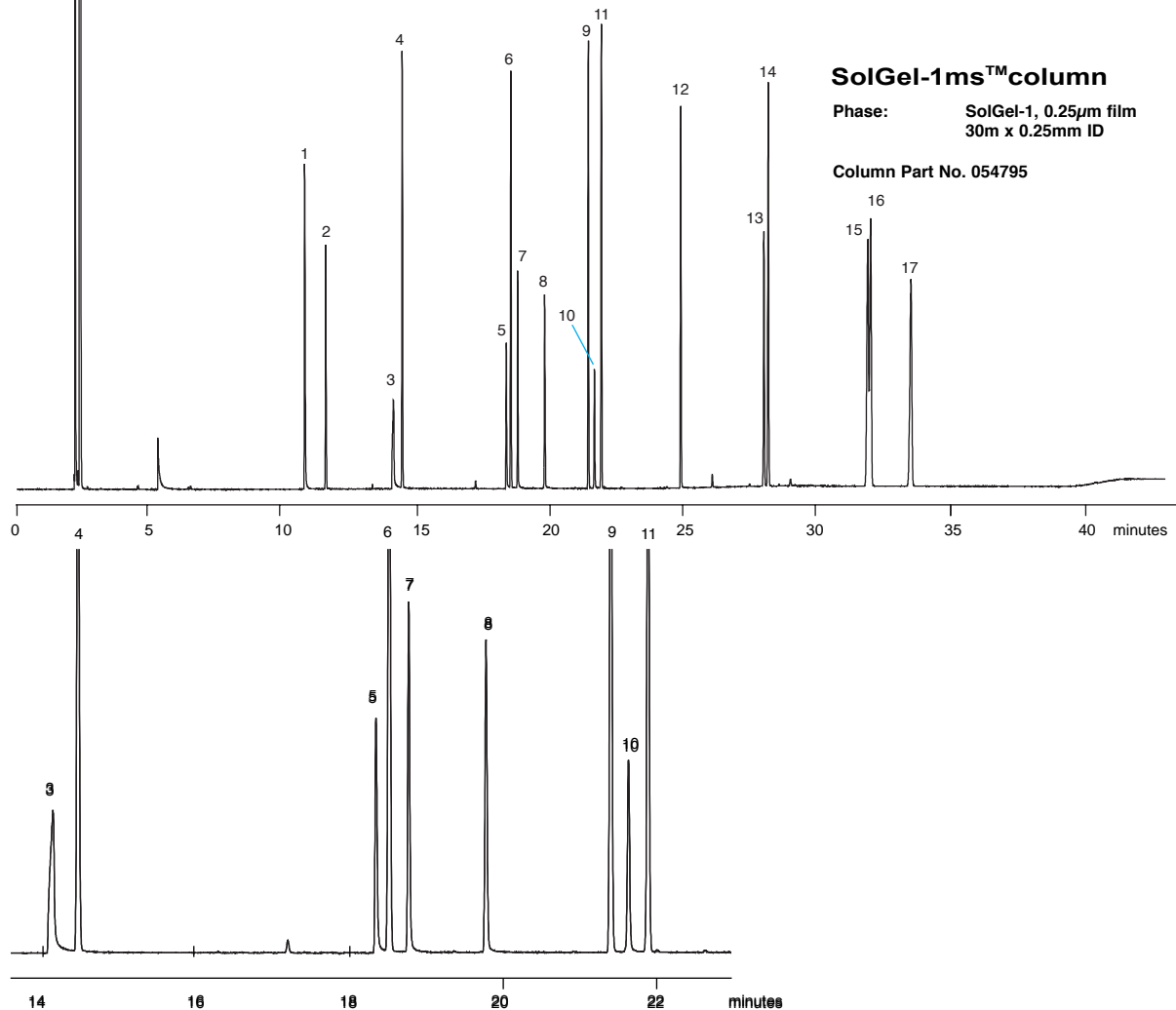


ENV 53 ENVIRONMENTAL

Activity Mix on SolGel-1ms™

Sample Description: Activity mix with internal standards 800mg/L, 5ng per component on column



SolGel-1ms™ column

Phase: SolGel-1, 0.25µm film
30m x 0.25mm ID

Column Part No. 054795

Sample Introduction:

Split / Splitless: Split
Injector Temp: 250°C
Injection Volume: 0.5µL
Autosampler Syringe: 5µL Fixed Needle
Part No. 001810
Septa: Auto-Sep T™
Part No. 041882

Injection Type: Split
Purge On Time: NA
Purge On (Split) Vent: 104mL/min
Split Ratio: 80 to 1
Liner Type: Single taper
Part No. 092017

Pressure/Flow Values:

Carrier Gas: Helium
Constant Flow: On
Pressure: 14.1psi
Column Flow: 1.3mL/min
Linear Velocity: 30cm/sec @ 40°C

Oven Parameters:

Initial Temp: 40°C
Initial Time: 4min
Rate 1: 10°C/min
Final Temp 1: 270°C
Hold Time: 12min
Rate 2: 30°C/min
Final Temp 2: 300°C
Hold Time: 3min
Run Time: 43.00min

Detector Parameters:

Detector Type: FID @ 300°C

1. aniline
2. 1, 4-dichlorobenzene - d8
3. benzoic acid
4. naphthalene - d8
5. 2, 4 - dinitrophenol
6. acenaphthalene - d10
7. 4 - nitrophenol
8. 2 - methyl - 4, 6 - dinitrophenol
9. 4 - aminobiphenyl
10. pentachlorophenol
11. phenanthrene - d10
12. benzidine
13. 3, 3 - dichlorobenzidine
14. chrysene - d12
15. benzo[b]fluoranthene
16. benzo[k]fluoranthene
17. perylene - d12

visit www.sge.com or contact our technical Customer Support Team on: techsupport@sge.com

SGE International Pty. Ltd.
email: support@sge.com

SGE Incorporated (USA)
email: usa@sge.com

SGE (France) Sarl
email: france@sge.com

SGE Deutschland GmbH
email: germany@sge.com

SGE Japan Inc.
email: sgejpn@itjit.ne.jp

SGE Australia Pty. Ltd.
email: sales@sge.com

SGE Europe Ltd. (UK)
email: uk@sge.com

SGE (Italia) Srl.
email: sge.italia@tin.it

SGE China Service Centre
email: sge@bj.col.com.cn

SGE India
email: sgeindia@bom4.vsnl.net.in