

**ENV 52**

**ENVIRONMENTAL**

## Industrial Solvents on SolGel-Wax™

**Sample Description:** Industrial solvents mix, 25 to 50ng per component on column

**Sample Introduction:**

Split / Splitless  
 Injector Temp: 240°C  
 Injection Volume: 0.1µL  
 Autosampler Syringe: 0.5µL Removable Needle  
 Part No. 000410  
 Septa: Auto-Sep T™  
 Part No. 041882

Injection Type: Split  
 Purge On Time: NA  
 Purge On (Split) Vent: 150mL/min  
 Split Ratio: 83 to 1  
 Liner Type: Single taper  
 Part No. 092017

**Pressure/Flow Values:**

Carrier Gas: Helium  
 Constant Flow: On  
 Pressure: 8.4psi  
 Column Flow: 1.84mL/min  
 Linear Velocity: 30cm/sec @ 35°C

**Oven Parameters:**

Initial Temp 35°C  
 Initial Time 3min  
 Rate 1 15°C/min  
 Final Temp 1 230°C  
 Hold Time 4min  
 Run Time 20.00min

**Detector Parameters:**

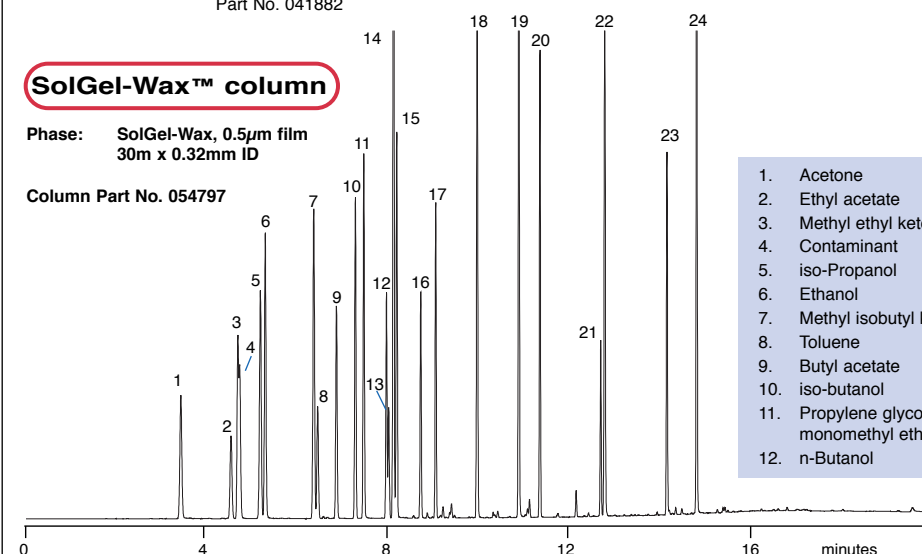
Detector Type FID @ 270°C

**SolGel-Wax™ column**

Phase: SolGel-Wax, 0.5µm film  
 30m x 0.32mm ID

Column Part No. 054797

- |                                       |                              |
|---------------------------------------|------------------------------|
| 1. Acetone                            | 13. Ethyl benzene            |
| 2. Ethyl acetate                      | 14. p-Xylene                 |
| 3. Methyl ethyl ketone                | 15. m-Xylene                 |
| 4. Contaminant                        | 16. o-Xylene                 |
| 5. iso-Propanol                       | 17. Butyl Cellosolve acetate |
| 6. Ethanol                            | 18. Cyclohexanone            |
| 7. Methyl isobutyl ketone             | 19. Butyl Cellosolve         |
| 8. Toluene                            | 20. Butyl glycol acetate     |
| 9. Butyl acetate                      | 21. Hexyl Cellosolve         |
| 10. iso-butanol                       | 22. Isophorone               |
| 11. Propylene glycol monomethyl ether | 23. Butyl Carbitol           |
| 12. n-Butanol                         | 24. Benzyl alcohol           |



visit [www.sge.com](http://www.sge.com) or contact our technical Customer Support Team on: [techsupport@sge.com](mailto:techsupport@sge.com)

SGE International Pty. Ltd.  
 email: support@sge.com

SGE Incorporated (USA)  
 email: usa@sge.com

SGE (France) Sarl  
 email: france@sge.com

SGE Deutschland GmbH  
 email: germany@sge.com

SGE Japan Inc.  
 email: sgejpn@itjit.ne.jp

SGE Australia Pty. Ltd.  
 email: sales@sge.com

SGE Europe Ltd. (UK)  
 email: uk@sge.com

SGE (Italia) Srl.  
 email: sge.italia@tin.it

SGE China Service Centre  
 email: sge@bj.col.com.cn

SGE India  
 email: sgeindia@bom4.vsnl.net.in