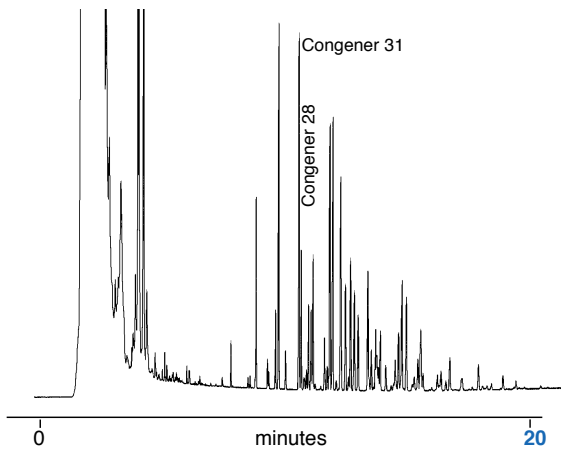


NORMAL

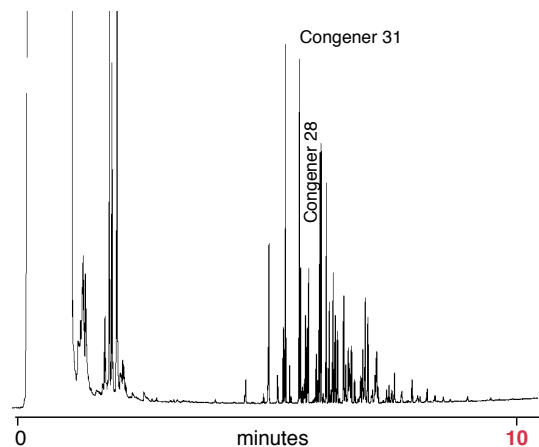
Chromatogram showing separation of PolyChlorinated Biphenyls (PCBs) using a conventional 30 meter x 0.25mm ID HT8 column with a 0.25 micron film.



Phase: HT8, 0.25 μ m film
Arochlor PCB Standard: 100ng/ μ L
Column: 30m x 0.25mm ID
Initial Temp: 50°C , 1min
Rate 1: 30°C/min to 200°C
Rate 2: 5°C/min to 280°C
Final Temp: 280°C, 0min
Detector Type: FID, 310°C
Carrier Gas: He, 14.4psi
Carrier Gas Flow : 1.3mL/min
Constant Flow: On
Average Linear Velocity: 30cm/sec at 50°C
Injection Mode: Splitless
Purge On Time: 1.0min
Purge On (Split) Vent Flow: 60mL/min
Injection Volume: 1.5 μ L
Injection Temperature: 250°C
Autosampler: Yes
Liner Type : 4mm ID FocusLiner™ with single taper
Liner Part Number: 092003
Column Part Number: 054677

FAST

Chromatogram showing separation of PolyChlorinated Biphenyls (PCBs) using a FAST PCB column.



Phase: Fast PCB, HT8, 0.1 μ m film
Arochlor PCB Standard: 100ng/ μ L
Column: 10m x 0.10mm ID
Initial Temp: 50°C , 1min
Rate 1: 30°C/min to 200°C
Rate 2: 15°C/min to 290°C
Final Temp: 290°C, 0min
Detector Type: FID, 310°C
Carrier Gas: He, 43.1psi
Carrier Gas Flow : 0.5mL/min
Constant Flow: On
Average Linear Velocity: 40cm/sec at 50°C
Injection Mode: Splitless
Purge On Time: 1.0min
Purge On (Split) Vent Flow: 10mL/min
Injection Volume: 0.5 μ L
Injection Temperature: 250°C
Autosampler: Yes
Liner Type : 2.3mm ID FocusLiner™ with single taper
Liner Part Number: 092111
Column Part Number: 054690

visit www.sge.com or contact our technical Customer Support Team on: techsupport@sge.com

SGE International Pty. Ltd.
email: support@sge.com

SGE Incorporated (USA)
email: usa@sge.com

SGE (France) Sarl
email: france@sge.com

SGE Deutschland GmbH
email: germany@sge.com

SGE Japan Inc.
email: sgejpn@itjit.ne.jp

SGE Australia Pty. Ltd.
email: sales@sge.com

SGE Europe Ltd. (UK)
email: uk@sge.com

SGE (Italia) Srl.
email: sge.italia@tin.it

SGE China Service Centre
email: sge@bj.col.com.cn

SGE India
email: sgeindia@bom4.vsnl.net.in