

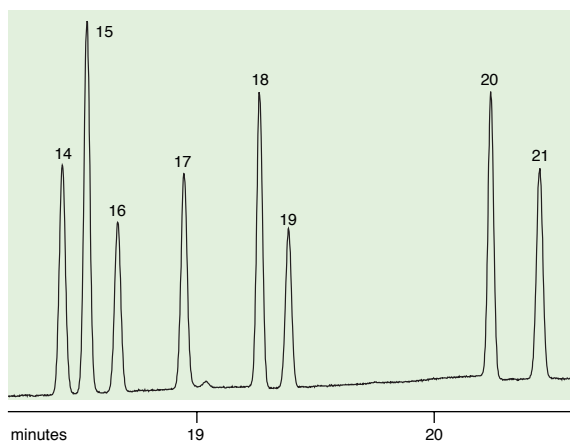
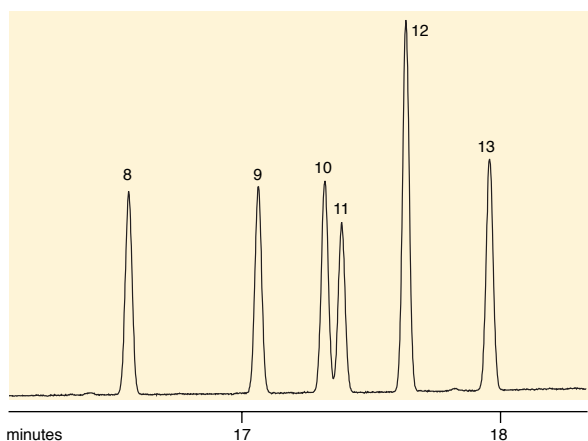
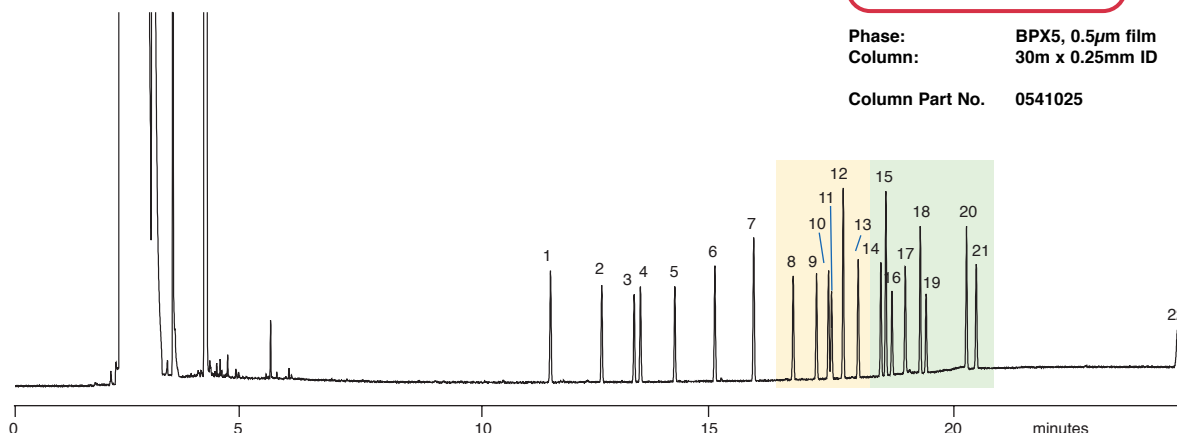
ENV 46 ENVIRONMENTAL

8081 Organochlorine Pesticides on BPX5

Sample Description 8081 mix with internal standards 10mg/L, 5ng per component on column.

BPX5 column

Phase: BPX5, 0.5µm film
Column: 30m x 0.25mm ID
Column Part No. 0541025



Sample Introduction:

Split / Splitless
Injector Temp: 240°C
Injection Volume: 1µL
Autosampler Syringe: 5µL Fixed Needle
Part No. 001810
Septa: Auto-Sep T™
Part No. 041882

Injection Type: Splitless
Purge On Time: 0.5min
Purge On (Spilt) Vent: 60mL/min
Split Ratio: NA
Liner Type: Single taper
Part No. 092017

Pressure/Flow Values:

Carrier Gas: Helium
Constant Flow: On
Pressure: 14.1psi
Column Flow: 1.3mL/min
Linear Velocity: 30cm/sec @ 40°C

Oven Parameters:

Initial Temp: 40°C
Initial Time: 1min
Rate 1: 30°C/min
Final Temp 1: 190°C
Hold Time: 3min
Rate 2: 10°C/min
Final Temp 2: 300°C
Hold Time: 5min
Run Time: 25.00min

Detector Parameters:

Detector Type: FID @ 310°C

1. 2, 4, 5, 6 – tetrachloro – meta – xylene
2. α – BHC
3. β – BHC
4. γ – BHC
5. δ – BHC
6. Heptachlor
7. Aldrin
8. Heptachlorepoxy
9. gamma – chlordane
10. alpha – chlordane
11. Endosulfan A
12. p, p' – DDE
13. Dieldrin
14. Endrin
15. p, p' – DDD
16. Endosulfan B
17. Endrin Aldehyde
18. p, p' – DDT
19. Endosulfan Sulfate
20. Methoxychlor
21. Endrin Ketone
22. Decachlorobiphenyl

visit www.sge.com or contact our technical Customer Support Team on: techsupport@sge.com

SGE International Pty. Ltd.
email: support@sge.com

SGE Incorporated (USA)
email: usa@sge.com

SGE (France) Sarl
email: france@sge.com

SGE Deutschland GmbH
email: germany@sge.com

SGE Japan Inc.
email: sgejpn@itjit.ne.jp

SGE Australia Pty. Ltd.
email: sales@sge.com

SGE Europe Ltd. (UK)
email: uk@sge.com

SGE (Italia) Srl.
email: sge.italia@tin.it

SGE China Service Centre
email: sge@bj.col.com.cn

SGE India
email: sgeindia@bom4.vsnl.net.in