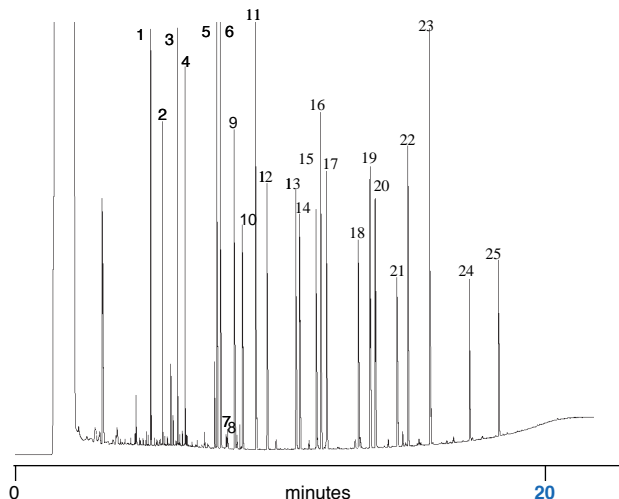


## ENV 45 ENVIRONMENTAL

## Organophosphorous Pesticides on BPX50

### NORMAL

Chromatogram showing separation of Organophosphorous pesticides using a conventional 30 meter x 0.25 mm ID BPX50 column with a 0.25 micron film.

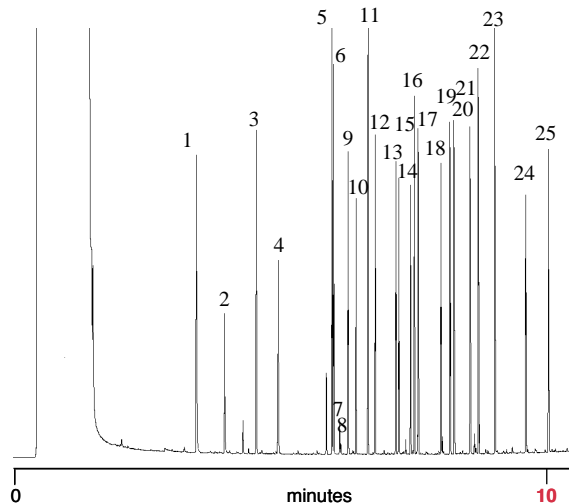


- |                                      |                |
|--------------------------------------|----------------|
| 1. 4-chloro-3-nitrobenzo-trifluoride | 7. Sulfotepp   |
| 2. Dichlorvos                        | 8. Naled       |
| 3. 1-Bromo-2-nitrobenzene            | 9. Phorate     |
| 4. $\alpha$ -mervinphos              | 10. Demeton    |
| 5. Tributylphosphate (IS)            | 11. Diazinon   |
| 6. Ethoprop                          | 12. Disulfoton |

**Phase:** BPX50, 0.25 $\mu$ m film  
**Mixture of Organophosphorous Pesticides**  
**Column:** 30m x 0.25mm ID  
**Initial Temp:** 50°C, 1min  
**Rate 1:** 30°C/min to 200°C, 3min  
**Rate 2:** 10°C/min to 310°C  
**Final Temp:** 310°C, 2min  
**Detector Type:** FID, 320°C  
**Carrier Gas:** He, 14.4psi  
**Carrier Gas Flow :** 1.30 mL/min  
**Constant Flow:** On  
**Average Linear Velocity:** 30 cm/sec at 50°C  
**Injection Mode:** Splitless  
**Purge On Time:** 0.5min  
**Purge On (Split) Vent Flow:** 60mL/min  
**Injection Volume:** 1.0 $\mu$ L  
**Injection Temperature:** 240°C  
**Autosampler:** Yes  
**Liner Type :** 4mm ID FocusLiner™ with single taper  
**Liner Part Number:** 092003  
**Column Part Number:** 054751

### FAST

Chromatogram showing separation of Organophosphorous pesticides using a **FAST BPX50** column.



- |                       |                             |               |
|-----------------------|-----------------------------|---------------|
| 13. Methyl Parathion  | 19. Tokuthion               | 25. Coumaphos |
| 14. Ronnel            | 20. Impurity                |               |
| 15. Chlorpyrifos      | 21. Fensulfthion            |               |
| 16. Fenthion          | 22. Impurity                |               |
| 17. Trichlorate       | 23. Triphenylphosphate (IS) |               |
| 18. Tetrachlorvinphos | 24. Guthion                 |               |

**Phase:** BPX50, 0.10 $\mu$ m film  
**Mixture of Organophosphorous Pesticides**  
**Column:** 10m x 0.10mm ID  
**Initial Temp:** 70°C, 1min  
**Rate 1:** 25°C/min to 320°C  
**Rate 2:** N/A  
**Final Temp:** 320°C, 0min  
**Detector Type:** FID, 320°C  
**Carrier Gas:** He, 39.0psi  
**Carrier Gas Flow :** 0.370mL/min  
**Constant Flow:** On  
**Average Linear Velocity:** 35cm/sec at 70°C  
**Injection Mode:** Split  
**Purge On Time:** 1.0  
**Purge On (Split) Vent Flow:** 10mL/min  
**Injection Volume:** 0.5 $\mu$ L  
**Injection Temperature:** 240°C  
**Autosampler:** Yes  
**Liner Type :** 2.3mm ID FocusLiner™  
**Liner Part Number:** 092005  
**Column Part Number:** 054740

visit [www.sge.com](http://www.sge.com) or contact our technical Customer Support Team on: [techsupport@sge.com](mailto:techsupport@sge.com)

SGE International Pty. Ltd.  
email: support@sge.com

SGE Incorporated (USA)  
email: usa@sge.com

SGE (France) Sarl  
email: france@sge.com

SGE Deutschland GmbH  
email: germany@sge.com

SGE Japan Inc.  
email: sgejpn@itjit.ne.jp

SGE Australia Pty. Ltd.  
email: sales@sge.com

SGE Europe Ltd. (UK)  
email: uk@sge.com

SGE (Italia) Srl.  
email: sge.italia@tin.it

SGE China Service Centre  
email: sge@bj.col.com.cn

SGE India  
email: sgeindia@bom4.vsnl.net.in