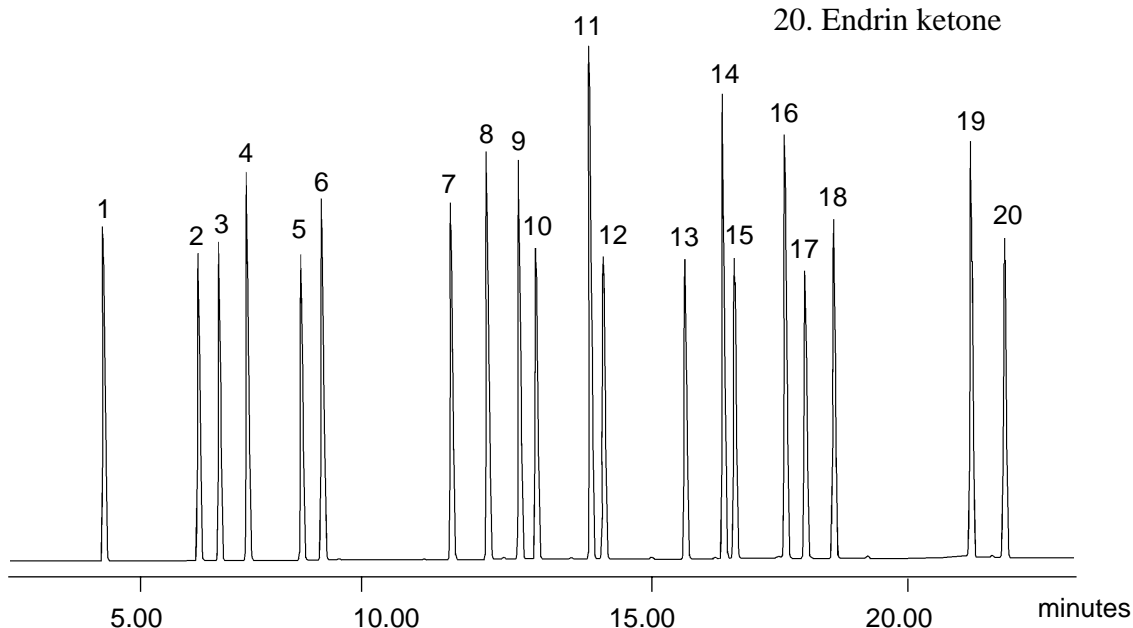


## Analysis of EPA 8081 Organochlorine Pesticides on BPX50

Part No.: 054751  
Phase: BPX50, 0.25 $\mu$ m  
Column: 30m x 0.25mm ID  
Initial Temp.: 50°C, 1min  
Rate 1: 20°C/min  
Temp 2: 170°C  
Rate 2: 8°C/min  
Final Temp.: 320°C  
Detector: HP5973 MSD  
Injector Mode: Split, 40:1, 280°C  
Carrier Gas: Helium @ 35cm/sec  
Injection Volume: 1 $\mu$ L

### Components

1.  $\alpha$ -BHC
2.  $\gamma$ -BHC
3.  $\beta$ -BHC
4. Heptachlor
5.  $\delta$ -BHC
6. Aldrin
7. Heptachlorepoxy
8. trans-Chlordane
9. cis-Chlordane
10. Endosulfan A
11. p,p'-DDE
12. Dieldrin
13. Endrin
14. p,p'-DDD
15. Endosulfan B
16. p,p'-DDT
17. Endrin aldehyde
18. Endosulfan sulfate
19. Methoxychlor
20. Endrin ketone



visit [www.sge.com](http://www.sge.com) or contact our technical Customer Support Team on: [techsupport@sge.com](mailto:techsupport@sge.com)

SGE International Pty. Ltd.  
email: support@sge.com

SGE Incorporated (USA)  
email: usa@sge.com

SGE (France) Sarl  
email: france@sge.com

SGE Deutschland GmbH  
email: germany@sge.com

SGE Japan Inc.  
email: sgejpn@itjit.ne.jp

SGE Australia Pty. Ltd.  
email: sales@sge.com

SGE Europe Ltd. (UK)  
email: uk@sge.com

SGE (Italia) Srl.  
email: sge.italia@tin.it

SGE China Service Centre  
email: sge@bj.col.com.cn

SGE India  
email: sgeindia@bom4.vsnl.net.in