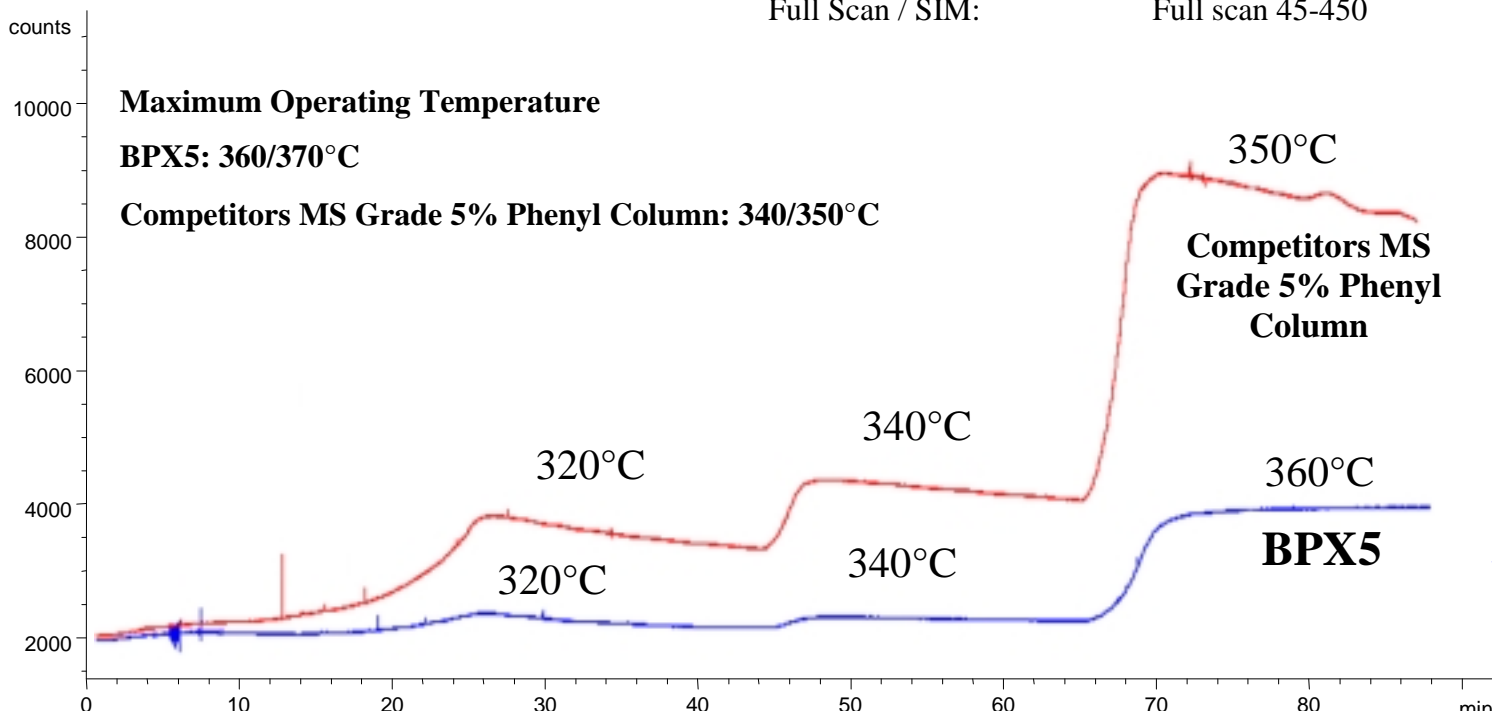


ARO 16 AROMATICS

Bleed Profile Comparison of BPX5 with Competitors MS Grade 5% Phenyl Column.

Phase: BPX5, 0.25µm film
Sample: NA
Column: 30m x 0.25 mm ID
Initial Temp: 40°C, 0 min.
Rate 1: 10°C/min to 320°C, 20 min
Rate 2: 10°C/min to 340°C, 20 min
Rate 3: 10°C/min to 360°C,
Final Temp.: 360°C, 20 min
Detector Type: Mass Spectrometer
Carrier Gas: He, 25.7 psi
Carrier Gas Flow: 1.8 mL/min.
Constant Flow: On
Average Linear Velocity: 35 cm/sec at 40°C
Liner Type: 4 mm ID Single Taper Liner
Liner Part Number: 092017
Column Part Number: 054101
ms-NoVent™ Part no.: 113400
HP5973 restrictor: 113409
Full Scan / SIM: Full scan 45-450

Phase: Competitors MS grade 5% Phenyl Column, 0.25µm film
Sample: NA
Column: 30m x 0.25 mm ID
Initial Temp: 40°C, 0 min.
Rate 1: 10°C/min to 320°C, 20 min
Rate 2: 10°C/min to 340°C, 20 min
Rate 3: 10°C/min to 350°C,
Final Temp.: 350°C, 20 min
Detector Type: Mass Spectrometer
Carrier Gas: He, 25.7 psi
Carrier Gas Flow: 1.8 mL/min.
Constant Flow: On
Average Linear Velocity: 35 cm/sec at 40°C
Liner Type: 4 mm ID Single Taper Liner
Liner Part Number: 092017
Column Part Number: NA
ms-NoVent™ Part no.: 113400
HP5973 restrictor: 113409
Full Scan / SIM: Full scan 45-450



visit www.sge.com or contact our technical Customer Support Team on: techsupport@sge.com

SGE International Pty. Ltd.
email:support@sge.com

SGE Incorporated (USA)
email:usa@sge.com

SGE (France) Sarl
email:france@sge.com

SGE Deutschland GmbH
email:germany@sge.com

SGE Japan Inc.
email:sgejpn@ijit.ne.jp

SGE Australia Pty. Ltd.
email:sales@sge.com

SGE Europe Ltd. (UK)
email:uk@sge.com

SGE (Italia) Srl.
email:sge.italia@tin.it

SGE China Service Centre
email:sge@bj.col.com.cn

SGE India
email:sgeindia@bom4.vsnl.net.in