

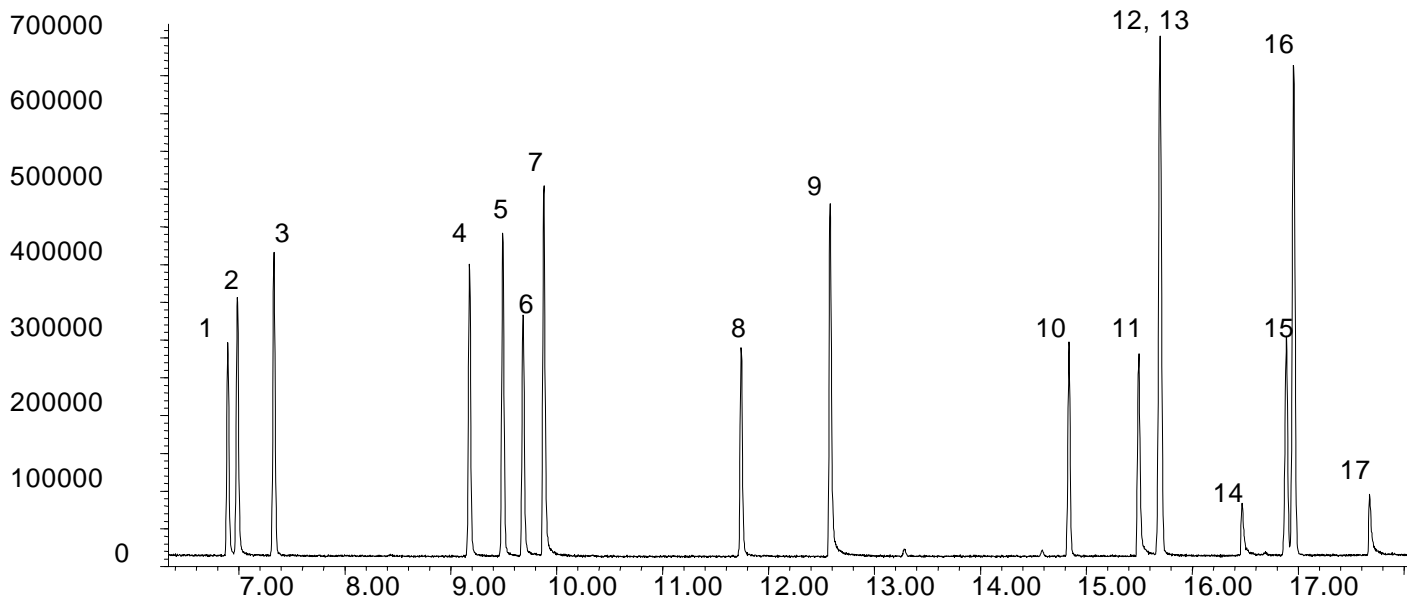
ARO 15 AROMATICS

Analysis of Chlorinated and Nitroaromatic Compounds on BPX35

Phase: BPX35, 0.25µm
Sample: 10ppm in methanol
Column: 30m x 0.25 mm ID
Initial Temp: 40°C, 1 min.
Rate 1: 30°C/min to 200°C,
Rate 2: 4°C/min to 300°C
Final Temp: 300°C, 5 min.
Detector Type: Mass Spectrometer
Carrier Gas: He, 25.7 psi
Carrier Gas Flow: 1.8 mL/min.
Constant Flow: On
Average Linear Velocity: 35 cm/sec at 40°C
Injection Mode: Split
Split Ratio: 100:1
Injection Volume: 1 µL
Injection Temperature: 250°C
Autosampler: No
Liner Type: 4 mm ID Single Taper Liner
Liner Part Number: 092017
Column Part Number: 054701
ms-NoVent™ Part no.: 113400
HP5973 restrictor: 113409
Full Scan / SIM: Full scan 45-450

Components

1. Phenol
2. 2-Chlorophenol
3. 1,4-Dichlorobenzene
4. Nitrobenzene
5. 3,5-Xylene
6. 2-Nitrophenol
7. 2,4-Dichlorophenol
8. 4-Chloro-3-methylphenol
9. 2,4,6-Trichlorophenol
10. 2,6-Dinitrotoluene
11. 4-Nitrophenol
12. 2,4-Dinitrotoluene
13. 4-Chlorophenylphenyl ether
14. 4,6-Dinitro-o-cresol
15. Hexachlorobenzene
16. 4-Bromophenylphenyl ether
17. Pentachlorophenol



visit www.sge.com or contact our technical Customer Support Team on: techsupport@sge.com

SGE International Pty. Ltd.
email: support@sge.com

SGE Australia Pty. Ltd.
email: sales@sge.com

SGE Incorporated (USA)
email: usa@sge.com

SGE Europe Ltd. (UK)
email: uk@sge.com

SGE (France) Sarl
email: france@sge.com

SGE (Italia) Srl.
email: sge.italia@tin.it

SGE Deutschland GmbH
email: germany@sge.com

SGE China Service Centre
email: sge@bj.col.com.cn

SGE Japan Inc.
email: sgejpn@itj.it.ne.jp

SGE India
email: sgeindia@bom4.vsnl.net.in