

ARO 02 AROMATICS

Analysis of Polynuclear Aromatic Hydrocarbons on HT5

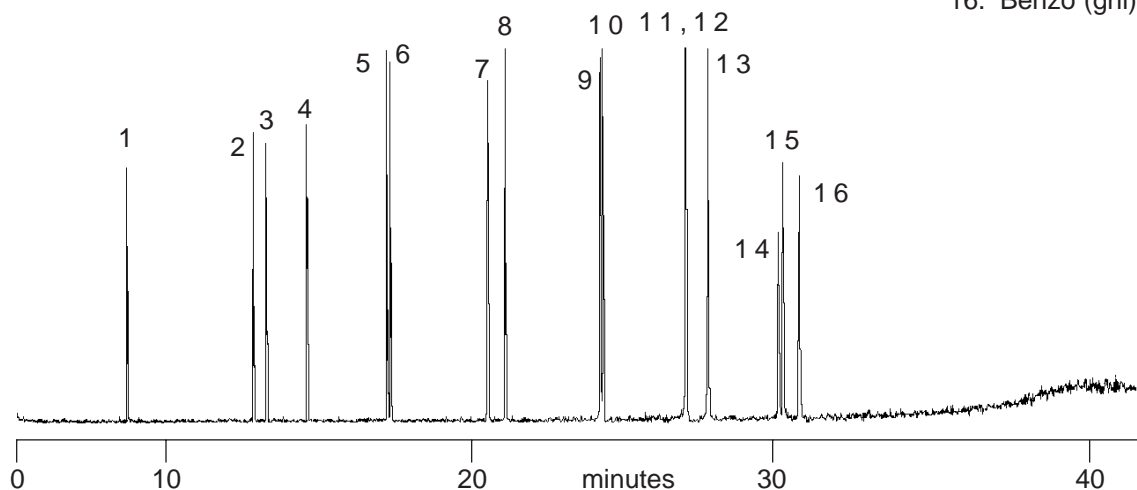
KEYWORDS:

PAH
PNA
Polynuclear Aromatics

Part No.: 054636
Phase: HT5, 0.10µm film
Column: 25m x 0.22mm ID
Initial Temp: 50°C, 2 min
Rate: 10°C/min
Final Temp: 420°C, 5 min
Detector: HP5971 MSD
Injection Mode: Split 50:1
Carrier Gas: He, 15psi

Components (0.5ng each component)

1. Naphthalene
2. Acenaphthylene
3. Acenaphthene
4. Fluorene
5. Phenanthrene
6. Anthracene
7. Pyrene
8. Fluoranthene
9. Chrysene
10. Benzo (a) anthracene
11. Benzo (b) Fluoranthene
12. Benzo (k) Fluoranthene
13. Benzo (a) pyrene
14. Indeno (1,2,3- cd) pyrene
15. Dibenzo (ah) anthracene
16. Benzo (ghi) perylene



visit www.sge.com or contact our technical Customer Support Team on: techsupport@sge.com

SGE International Pty. Ltd.
email: support@sge.com

SGE Incorporated (USA)
email: usa@sge.com

SGE (France) Sarl
email: france@sge.com

SGE Deutschland GmbH
email: germany@sge.com

SGE Japan Inc.
email: sgejpn@itjit.ne.jp

SGE Australia Pty. Ltd.
email: sales@sge.com

SGE Europe Ltd. (UK)
email: uk@sge.com

SGE (Italia) Srl.
email: sge.italia@tin.it

SGE China Service Centre
email: sge@bj.col.com.cn

SGE India
email: sgeindia@bom4.vsnl.net.in