

ARO 06
AROMATICS

Analysis of Nitroaromatics on HT8

KEYWORDS:

Nitro Aromatics

Nitrotoluene

Aminotoluene

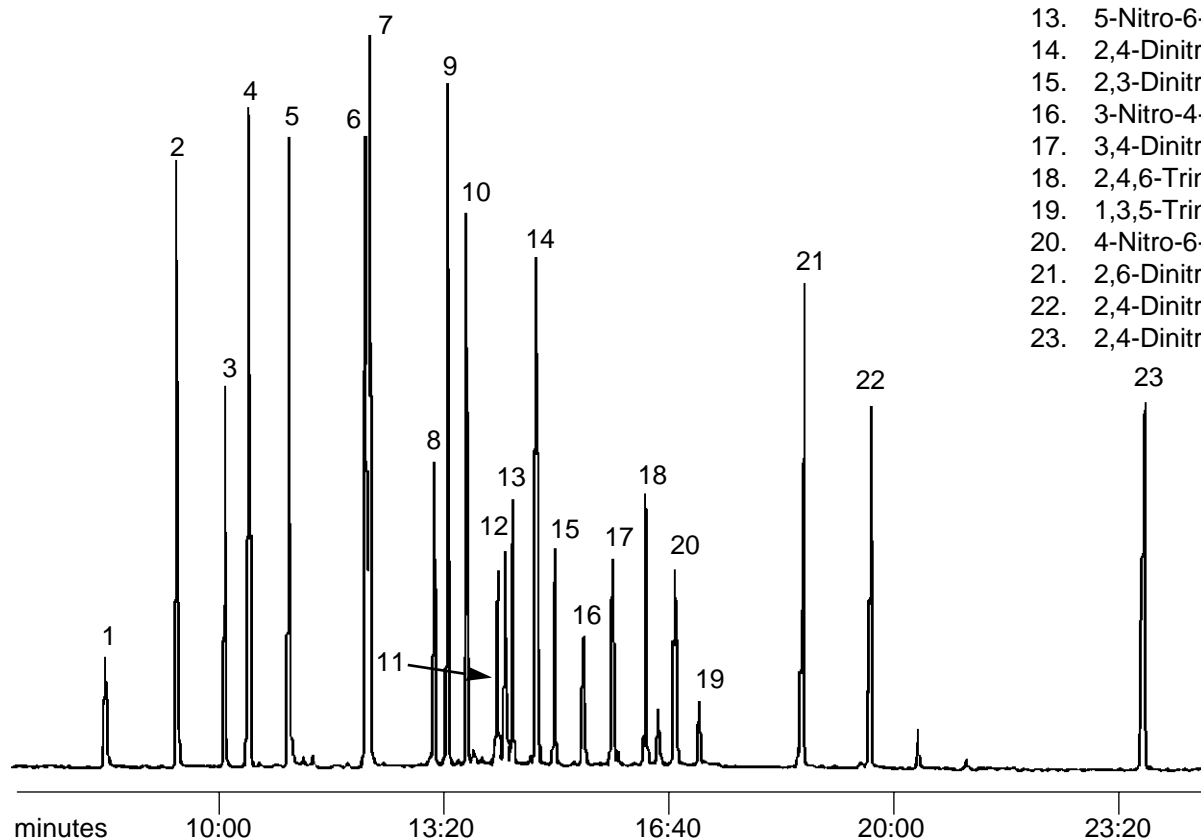
Notes: HT8 provides excellent separation of these components with a short analysis times. HT8 is also a low bleed column providing compatibility with GC-MS applications.

NITROAROMATICS

Part No.: 054675
Phase: HT8, 0.25µm
Column: 25m x 0.22mm ID
Initial Temp: 60°C, 2 min
Rate: 12°C/min
Final Temp: 360°C, 10 min
Detector: Ion-Trap MS
Injection Mode: PTV
Carrier Gas: He, 15 psi

Components

1. Nitrobenzene
2. 2-Nitrotoluene
3. 3-Nitrotoluene
4. 4-Nitrotoluene
5. 2,3-Diaminotoluene
6. 2,4-Diaminotoluene
7. 2,6-Diaminotoluene
8. 1,4-Dinitrobenzene
9. 2,6-Dinitrotoluene
10. 1,3-Dinitrobenzene
11. 2-Nitro-6-aminotoluene
12. 1,2-Dinitrobenzene
13. 5-Nitro-6-aminotoluene
14. 2,4-Dinitrotoluene
15. 2,3-Dinitrotoluene
16. 3-Nitro-4-aminotoluene
17. 3,4-Dinitrotoluene
18. 2,4,6-Trinitrotoluene
19. 1,3,5-Trinitrobenzene
20. 4-Nitro-6-aminotoluene
21. 2,6-Dinitro-4-aminotoluene
22. 2,4-Dinitro-6-aminotoluene
23. 2,4-Dinitrodiphenylamine



visit www.sge.com or contact our technical Customer Support Team on: techsupport@sge.com

SGE International Pty. Ltd.
email: support@sge.com

SGE Incorporated (USA)
email: usa@sge.com

SGE (France) Sarl
email: france@sge.com

SGE Deutschland GmbH
email: germany@sge.com

SGE Japan Inc.
email: sgejpn@itjit.ne.jp

SGE Australia Pty. Ltd.
email: sales@sge.com

SGE Europe Ltd. (UK)
email: uk@sge.com

SGE (Italia) Srl.
email: sge.italia@tin.it

SGE China Service Centre
email: sge@bj.col.com.cn

SGE India
email: sgeindia@bom4.vsnl.net.in