

Analysis of Substituted Benzenes on HT5

KEYWORDS:

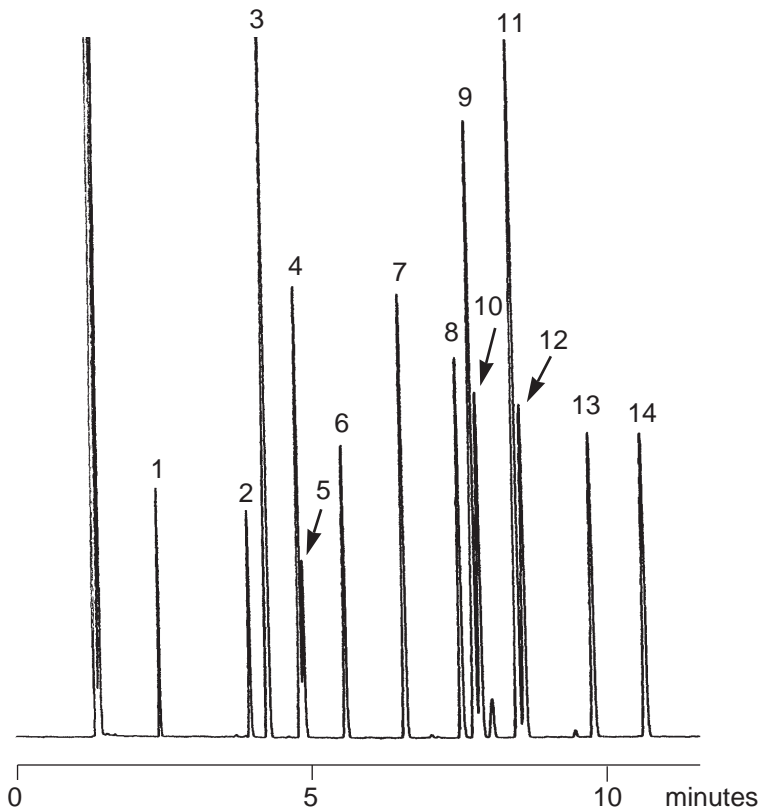
Substituted Benzenes
Xylenes

SUBSTITUTED BENZENES

Part No.: 054642
Phase: HT5, 0.1µm
Column: 25m x 0.32mm I.D.
(Polyimide Clad)
Initial Temp.: 40°C, 2 min
Program Rate: 4°C/min.
Final Temp.: 70°C, 4 min
Carrier Gas: H₂, 6 psi
Detector: FID
Sensitivity: 32 x10⁻¹²AFS
Injection Mode: Split

Components

1. Toluene
2. Ethylbenzene
3. *m* & *p*-Xylene
4. Styrene
5. *o*-Xylene
6. *iso*-Propylbenzene
7. *n*-Propylbenzene
8. 1, 3, 5-Trimethylbenzene
9. *α*-Methylstyrene
10. *tert*-Butylbenzene
11. 1, 2, 4-trimethylbenzene & *iso*-butylbenzene
12. *sec*-Butylbenzene
13. *β*-Methylstyrene
14. *n*-Butylbenzene



visit www.sge.com or contact our technical Customer Support Team on: techsupport@sge.com

SGE International Pty. Ltd.
email: support@sge.com

SGE Incorporated (USA)
email: usa@sge.com

SGE (France) Sarl
email: france@sge.com

SGE Deutschland GmbH
email: germany@sge.com

SGE Japan Inc.
email: sgejpn@itjit.ne.jp

SGE Australia Pty. Ltd.
email: sales@sge.com

SGE Europe Ltd. (UK)
email: uk@sge.com

SGE (Italia) Srl.
email: sge.italia@tin.it

SGE China Service Centre
email: sge@bj.col.com.cn

SGE India
email: sgeindia@bom4.vsnl.net.in