

ARO 04 AROMATICS

Analysis of Substituted Aromatics on BP5

KEYWORDS:

Substituted Benzenes

Benzenes

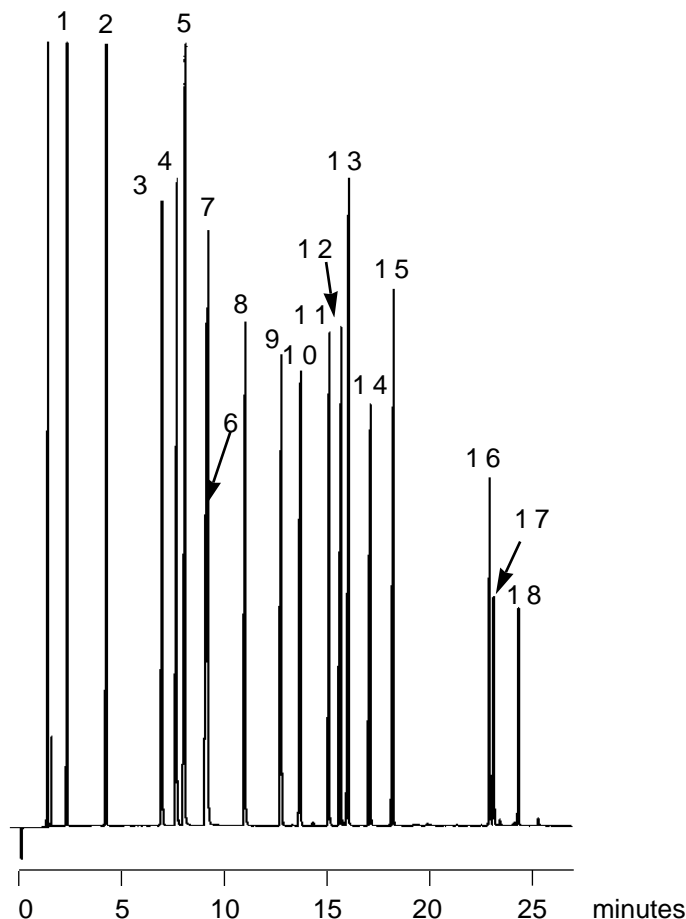
Chlorobenzenes

SUBSTITUTED AROMATICS

Part No.: 054168
 Phase: BP5, 0.25µm film
 Column: 25m x 0.22mm ID
 Initial Temp: 40°C, 4 min
 Rate 1: 2°C/min
 Temp 2: 60°C
 Rate 2: 5°C/min
 Final Temp: 80°C, 2 min
 Detector: FID
 Sensitivity: 64 x 10⁻¹² AFS
 Injection Mode: Split

Components

- | | |
|----------------------------|---|
| 1. Benzene | 11. 1,2,4-Trimethylbenzene |
| 2. Toluene | 12. m-Dichlorobenzene |
| 3. Chlorobenzene | 13. sec-Butylbenzene, p-Dichlorobenzene |
| 4. Ethylbenzene | 14. o-Dichlorobenzene |
| 5. m,p-Xylene | 15. Butylbenzene |
| 6. o-Xylene | 16. 1,2,4-Trichlorobenzene |
| 7. Styrene | 17. Naphthalene |
| 8. isoPropylbenzene | 18. Hexachlorobutadiene |
| 9. n-Propylbenzene | |
| 10. 1,3,5-Trimethylbenzene | |



visit www.sge.com or contact our technical Customer Support Team on: techsupport@sge.com

SGE International Pty. Ltd.
email:support@sge.com

SGE Incorporated (USA)
email:usa@sge.com

SGE (France) Sarl
email:france@sge.com

SGE Deutschland GmbH
email:germany@sge.com

SGE Japan Inc.
email:sgejpn@itjit.ne.jp

SGE Australia Pty. Ltd.
email:sales@sge.com

SGE Europe Ltd. (UK)
email:uk@sge.com

SGE (Italia) Srl.
email:sge.italia@tin.it

SGE China Service Centre
email:sge@bj.col.com.cn

SGE India
email:sgeindia@bom4.vsnl.net.in