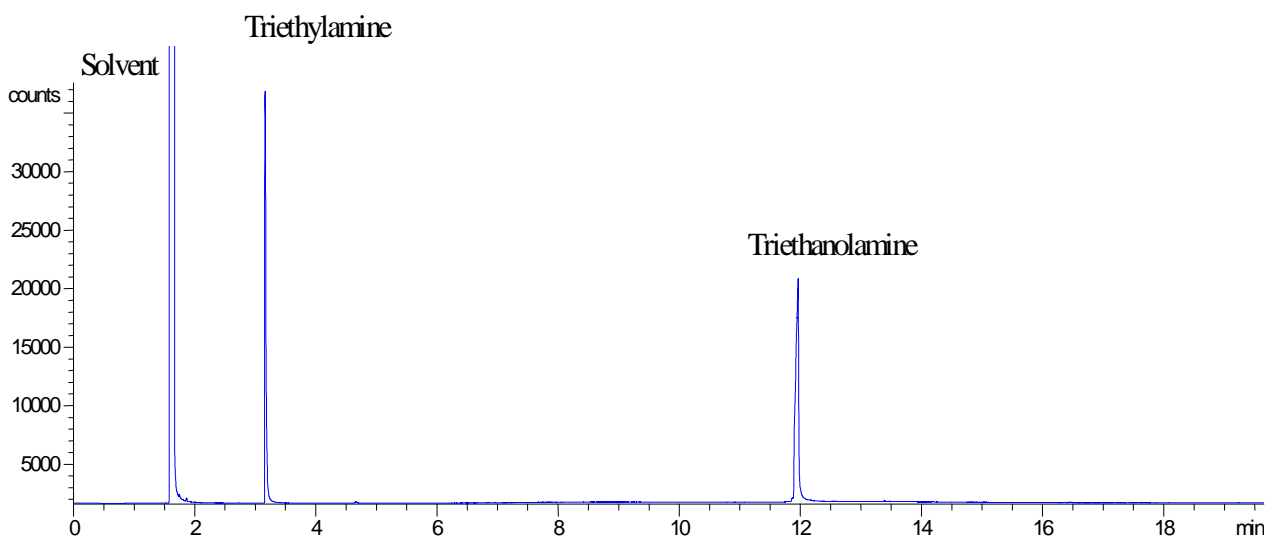


AMI 07
AMINES

Analysis of Triethylamine and Triethanolamine on SolGel-1ms™

Phase	SolGel-1ms, 0.25µm film
Amine mix	10 ng/µl in dichloromethane
Column	30 m x 0.32 mm ID
Initial Temp.	40°C, 5.0 min.
Rate 1.	20°C/min to 200°C
Final Temp.	200°C, 7 min.
Detector Type.	FID
Detector Temp.	300°C
Carrier Gas.	Helium, 9.9 psi
Carrier Gas Flow	2.2 mL/min
Constant Flow	On
Average Linear Velocity	35cm/sec at 100°C
Mode of Injection	Split
Split Ratio	50:1
Injection Volume	0.3 µL
Injection Temp.	250°C
Autosampler	No
Part No.:	054798



visit www.sge.com or contact our technical Customer Support Team on: techsupport@sge.com

SGE International Pty. Ltd.
email: support@sge.com

SGE Incorporated (USA)
email: usa@sge.com

SGE (France) Sarl
email: france@sge.com

SGE Deutschland GmbH
email: germany@sge.com

SGE Japan Inc.
email: sgejpn@itjit.ne.jp

SGE Australia Pty. Ltd.
email: sales@sge.com

SGE Europe Ltd. (UK)
email: uk@sge.com

SGE (Italia) Srl.
email: sge.italia@tin.it

SGE China Service Centre
email: sge@bj.col.com.cn

SGE India
email: sgeindia@bom4.vsnl.net.in