

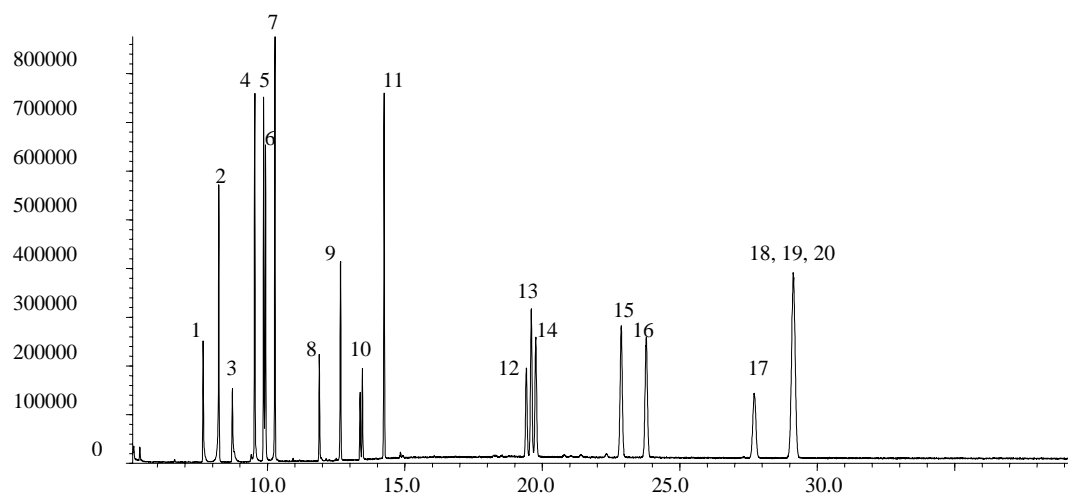
AMI 06 AMINES

Analysis of Aromatic Amines from Diazo Dyes on BPX35

Keywords

Azo Dyes
Amines

Phase:	BPX35 0.25µm film	Components
Azo Dyes standard:	10ppm solution in DCM	1. Indolin
Column:	30m x 0.25 mm ID	2. o-Toluidine
Initial Temp:	50°C, 2 min.	3. 2,4-Diaminoanisole
Rate 1:	15°C to 240°C	4. p-Chloroaniline
Rate 2:	10°C to 280°C	5. p-Cresidine
Final Temp:	280°C, 25 min.	6. 2,4,6-Trimethylaniline
Detector Type:	MSD	7. 4-Chlorotoluidine
Carrier Gas:	He, 7.1psi	8. Unknown
Carrier Gas Flow:	1.0 mL/min.	9. 2-Naphthylamine
Constant Flow:	On	10. Unknown
Average Linear Velocity:	36 cm/sec at 50°C	11. 4-Aminodiphenyl
Injection Mode:	Splitless	12. 4,4'-Oxydianiline
Purge on Time:	1.0 min.	13. 4,4'-Diaminodiphenylmethane
Purge on (Split) Vent Flow:	60mL/min.	14. Benzidine
Injection Volume:	1 µL	15. 3,3'-Dimethyl-4,4'-diaminodiphenylmethane
Injection Temperature:	250°C	16. 3,3'-dimethylbenzidine
Autosampler:	No	17. 4,4'-Thiodianiline
Liner Type:	4 mm ID Double Taper Liner	18. 3,3'-Dichlorobenzidine
Liner Part Number:	092018	19. 4,4'-Methylene-bis(2-chloroaniline)
Column Part Number:	054701	20. 3,3'-Dimethoxybenzidine



visit www.sge.com or contact our technical Customer Support Team on: techsupport@sge.com

SGE International Pty. Ltd.
email: support@sge.com

SGE Incorporated (USA)
email: usa@sge.com

SGE (France) Sarl
email: france@sge.com

SGE Deutschland GmbH
email: germany@sge.com

SGE Japan Inc.
email: sgejpn@itjit.ne.jp

SGE Australia Pty. Ltd.
email: sales@sge.com

SGE Europe Ltd. (UK)
email: uk@sge.com

SGE (Italia) Srl.
email: sge.italia@tin.it

SGE China Service Centre
email: sge@bj.col.com.cn

SGE India
email: sgeindia@bom4.vsnl.net.in