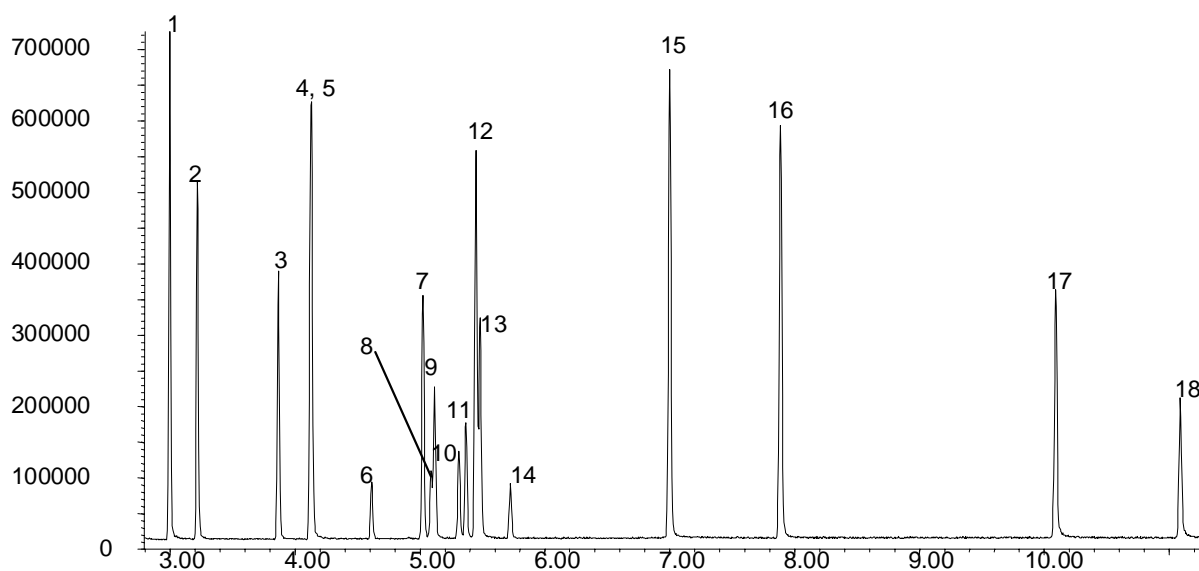


**Phase:** BPX5 0.25µm film  
**Sample:** 200ppm in methanol  
**Column:** 30m x 0.25 mm ID  
**Initial Temp:** 80°C, 1 min.  
**Rate 1:** 10°C/min to 300°C,  
**Final Temp:** 300°C, 5 min.  
**Detector Type:** Mass spectrometer  
**Carrier Gas:** He, 36.2 psi  
**Carrier Gas Flow:** 2.1 mL/min.  
**Constant Flow:** On  
**Average Linear Velocity:** 35 cm/sec at 80°C  
**Injection Mode:** Split  
**Split Ratio:** 100:1  
**Injection Volume:** 1 µL  
**Injection Temperature:** 250°C  
**Autosampler:** No  
**Liner Type:** 4 mm ID Single Taper Liner  
**Liner Part Number:** 092017  
**Column Part Number:** 054101  
**ms-NoVent™ Part no.:** 113400  
**HP5973 restrictor:** 113409  
**Full Scan / SIM:** Full scan 45-450

### Components

1. Phenol
2. 2-Chlorophenol
3. o-Cresol
4. p-Cresol
5. m-Cresol
6. 2,6- Xylenol
7. 2-Nitrophenol
8. 2,4- Xylenol
9. 2,5- Xylenol
10. p-Ethylphenol
11. 3,5- Xylenol
12. 2,4- Xylenol
13. 2,3- Xylenol
14. Isopropylphenol
15. 4-Chloro-3-methylphenol
16. 2,4,6-Trichlorophenol
17. 4-Nitrophenol
18. 2-Methyl-4,6-dinitrophenol



visit [www.sge.com](http://www.sge.com) or contact our technical Customer Support Team on: [techsupport@sge.com](mailto:techsupport@sge.com)