

ALC 05 ALCOHOLS

Analysis of USEPA 625 Phenols Mix on BPX5

USEPA 625 Phenols Mix

Phase: BPX5, 0.25mm

Column: 30m x 0.25mm ID

Injector Temp: 240°C

Injector Mode: Split, 80:1, 1.3ng O.C.

Injection Volume: 0.5µL

Carrier Gas: Helium, 25cm/sec.

Initial Oven Temp: 40°C, 1min.

Rate 1: 10°C/min.

Final Temp 1: 140°C,

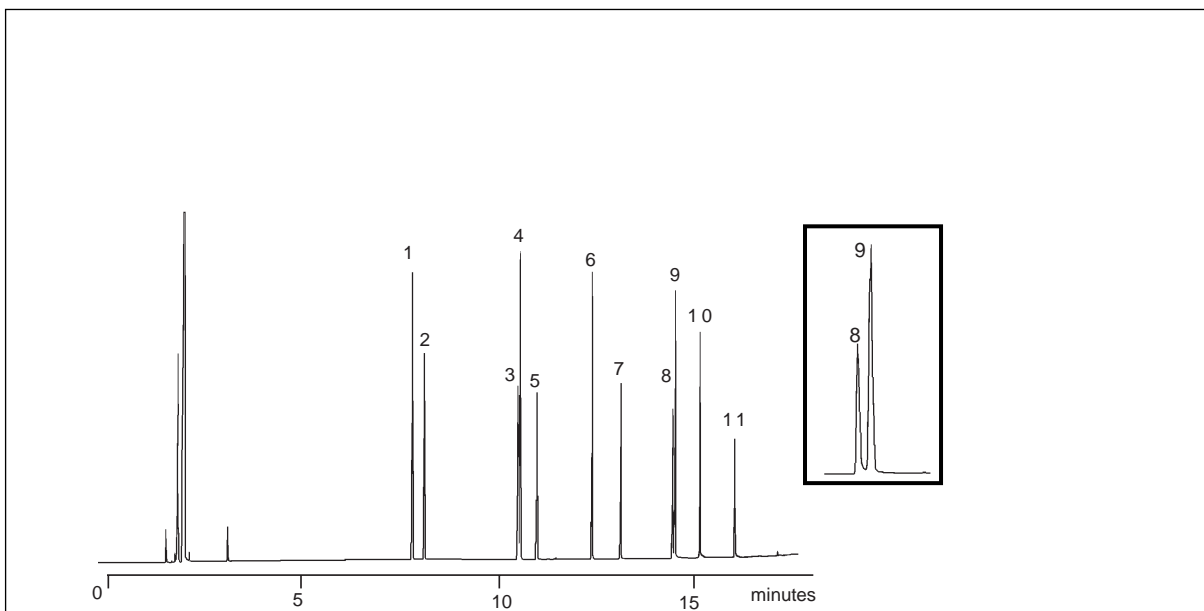
Rate 2: 20°C/min.

Final Temp 2: 280°C

Detector: FID, 300°C

Part No.: 054101

1. Phenol
2. 2-Chlorophenol
3. 2-Nitrophenol
4. 2, 4-Dimethylphenol
5. 2, 4-Dichlorophenol
6. 4-Chloro-3-methylphenol
7. 2, 4, 6-Trichlorophenol
8. 2, 4- Dinitrophenol
9. 4-Nitrophenol
10. 2-Methyl-4, 6-dinitrophenol
11. Pentachlorophenol



visit www.sge.com or contact our technical Customer Support Team on: techsupport@sge.com

SGE International Pty. Ltd.
email: support@sge.com

SGE Incorporated (USA)
email: usa@sge.com

SGE (France) Sarl
email: france@sge.com

SGE Deutschland GmbH
email: germany@sge.com

SGE Japan Inc.
email: sgejpn@itjit.ne.jp

SGE Australia Pty. Ltd.
email: sales@sge.com

SGE Europe Ltd. (UK)
email: uk@sge.com

SGE (Italia) Srl.
email: sge.italia@tin.it

SGE China Service Centre
email: sge@bj.col.com.cn

SGE India
email: sgeindia@bom4.vsnl.net.in