

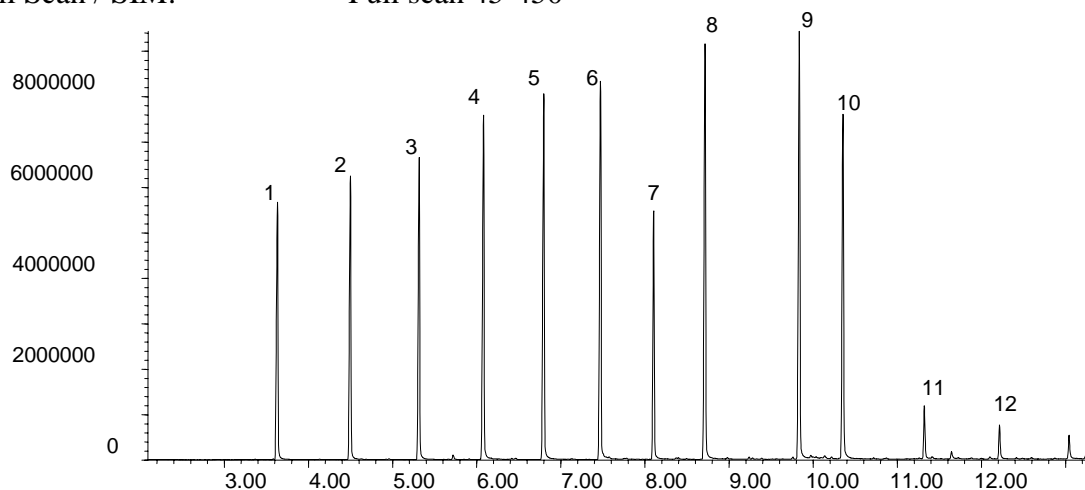
ALC 08 ALCOHOLS

Analysis of Aliphatic Alcohols on BPX35

Phase: BPX35, 0.25µm film
Sample: 200ppm in Dichloromethane
Column: 30m x 0.25 mm ID
Initial Temp: 40°C, 1 min.
Rate 1: 20°C/min to 300°C,
Final Temp: 300°C, 5 min.
Detector Type: Mass Spectrometer
Carrier Gas: He, 25.7 psi
Carrier Gas Flow: 1.8 mL/min.
Constant Flow: On
Average Linear Velocity: 35 cm/sec at 40°C
Injection Mode: Split
Split Ratio: 100:1
Injection Volume: 1 µL
Injection Temperature: 250°C
Autosampler: No
Liner Type: 4 mm ID Single Taper Liner
Liner Part Number: 092017
Column Part Number: 054701
ms-NoVent™ Part no.: 113400
HP5973 restrictor: 113409
Full Scan / SIM: Full scan 45-450

Components

1. Hexanol
2. Heptanol
3. Octanol
4. Nonanol
5. Decanol
6. Undecanol
7. Dodecanol
8. Tridecanol
9. Tetradecanol
10. Pentadecanol
11. Octadecanol
12. Eicosanol



visit www.sge.com or contact our technical Customer Support Team on: techsupport@sge.com

SGE International Pty. Ltd.
email: support@sge.com

SGE Incorporated (USA)
email: usa@sge.com

SGE (France) Sarl
email: france@sge.com

SGE Deutschland GmbH
email: germany@sge.com

SGE Japan Inc.
email: sgejpn@itjit.ne.jp

SGE Australia Pty. Ltd.
email: sales@sge.com

SGE Europe Ltd. (UK)
email: uk@sge.com

SGE (Italia) Srl.
email: sge.italia@tin.it

SGE China Service Centre
email: sge@bj.col.com.cn

SGE India
email: sgeindia@bom4.vsnl.net.in