

## ACL 01 ALCOHOLS

## Analysis of C3-C5 Diols on BP20

### KEYWORDS:

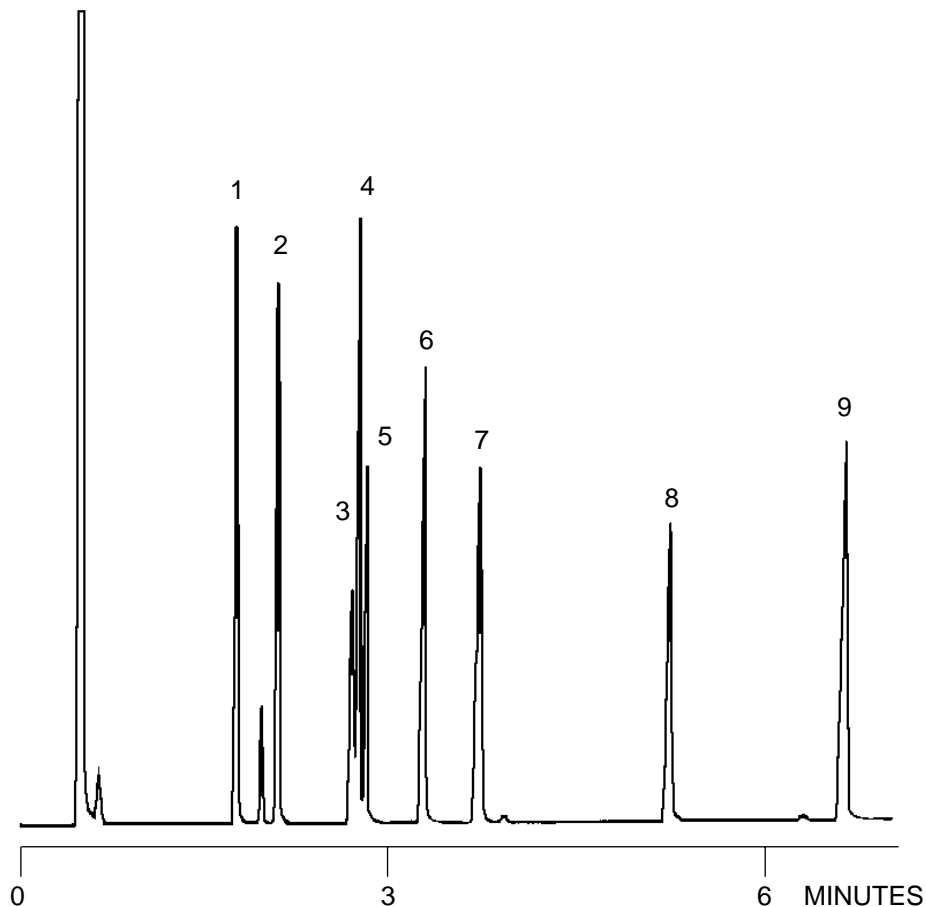
Diols

Notes: BP20 phase is ideal for alcohols

Part No.: 054426  
Phase: BP20, 0.25 $\mu$ m film  
Column: 15m x 0.25mm ID  
Initial Temp: 110°C  
Rate: 8°C/min  
Final Temp: 170°C  
Detector: FID  
Sensitivity: 16 x 10<sup>-11</sup> AFS  
Injection Mode: Split

### Components

1. 2,3-Butanediol
2. 1,2-Propanediol
3. Unknown
4. 1,2-Butanediol
5. 2,4-Pentanediol
6. 1,3-Butanediol
7. 1,3-Propanediol
8. 1,4-Butanediol
9. 1,5-Pentanediol



visit [www.sge.com](http://www.sge.com) or contact our technical Customer Support Team on: [techsupport@sge.com](mailto:techsupport@sge.com)

SGE International Pty. Ltd.  
email: support@sge.com

SGE Incorporated (USA)  
email: usa@sge.com

SGE (France) Sarl  
email: france@sge.com

SGE Deutschland GmbH  
email: germany@sge.com

SGE Japan Inc.  
email: sgejpn@itjit.ne.jp

SGE Australia Pty. Ltd.  
email: sales@sge.com

SGE Europe Ltd. (UK)  
email: uk@sge.com

SGE (Italia) Srl.  
email: sge.italia@tin.it

SGE China Service Centre  
email: sge@bj.col.com.cn

SGE India  
email: sgeindia@bom4.vsnl.net.in