

# The Separation of Aromatics from Olefins in Petroleum Samples using *forte* BPX90

Dr Paul Wynne, SGE Analytical Science

## Introduction

Regardless of the method used for sample preparation, the separation of aromatic and aliphatic components during the analysis of petroleum and related products remains an important application for gas chromatography. SGE's BPX90 GC capillary column is a highly polar phase that offers unique selectivity and the opportunity to speciate petroleum based products on the basis of degree of unsaturation.

While the aromatic content of petroleum products is important to their function, the aromatic components are of particular concern because they pose a toxicological threat and so are legitimate targets in many gas chromatographic applications. Successful speciation of aromatic and saturate groups is made difficult because of the need to use columns with sufficient polarity that separation is not based only on boiling point (vapor pressure) but that also have sufficient thermal stability to allow the elution of higher boiling hydrocarbons.

## Experimental Conditions

A petroleum sample for analysis was obtained for analysis from a domestic automotive fuel supply. Gas chromatography-mass spectrometry analysis was performed using an Agilent 6890 GC - 5973 MSD (Palo Alto, CA, USA) fitted with a BPX90 capillary column (30 m x 0.25 mm ID, film thickness 250 micron, P/N 054580), a No-Vent II (SGE International) and an ETP 14616 electron multiplier (Sydney, Australia). The column temperature settings were 40°C for 5 min then the GC oven was heated at 30°C/min to 230°C with a final holding time of 5 minutes. Injector and detector temperatures were at 240°C and 230°C, respectively. Cold-needle injection of 0.3 $\mu$ l of sample was split at the rate of 60:1 with a nominal pressure pulse of 25.7 psi to give a helium flowrate of 1.8 ml/min in constant flowrate mode. Electron Impact (EI)-MS was conducted under standard conditions using an unskewed automatic tune over the range of 45 to 450 Da with a data acquisition rate of 2 s/scan.

## Results

Analysis of the petroleum sample on BPX90 allowed the elution of hydrocarbons up to C10 before benzene and other aromatics (see Figure 1). Mechanistically, the BPX90 has negligible

non-polar characteristics and so saturates are eluted on the basis of their vapor pressure only. The comparatively strong retention of the aromatics is evidence of a very strong  $\pi$ -bonding phase that is generally useful for the speciation of compounds containing isolated double and triple bonds. Unlike the PEG phases in which the n-bonding moieties are fixed to the phase backbone, the BPX90 has mobile isolated  $\pi$ -bonding functional groups that do not provide complete resolution of the meta- and para-xylenes. However, this characteristic of the phase separation on the basis of  $\pi$ -density in sterically hindered fused ring systems that are not well resolved on alternative phases.

## Conclusion

The BPX90 column is effective at separating aliphatic and aromatic components in petroleum based products. A maximum operating temperature of 280°C and the selectivity of the phase towards aromatic species is attributable to the very high  $\pi$ -bonding capacity of the phase that allows retention of suitable analytes in the absence of a significant non-polar capacity.

The very high selectivity towards higher aromatics (naphthalenes and higher) also provide a phase with exquisite resolution that is also completely orthogonal to non-polar phases for 2-dimensional GC applications.

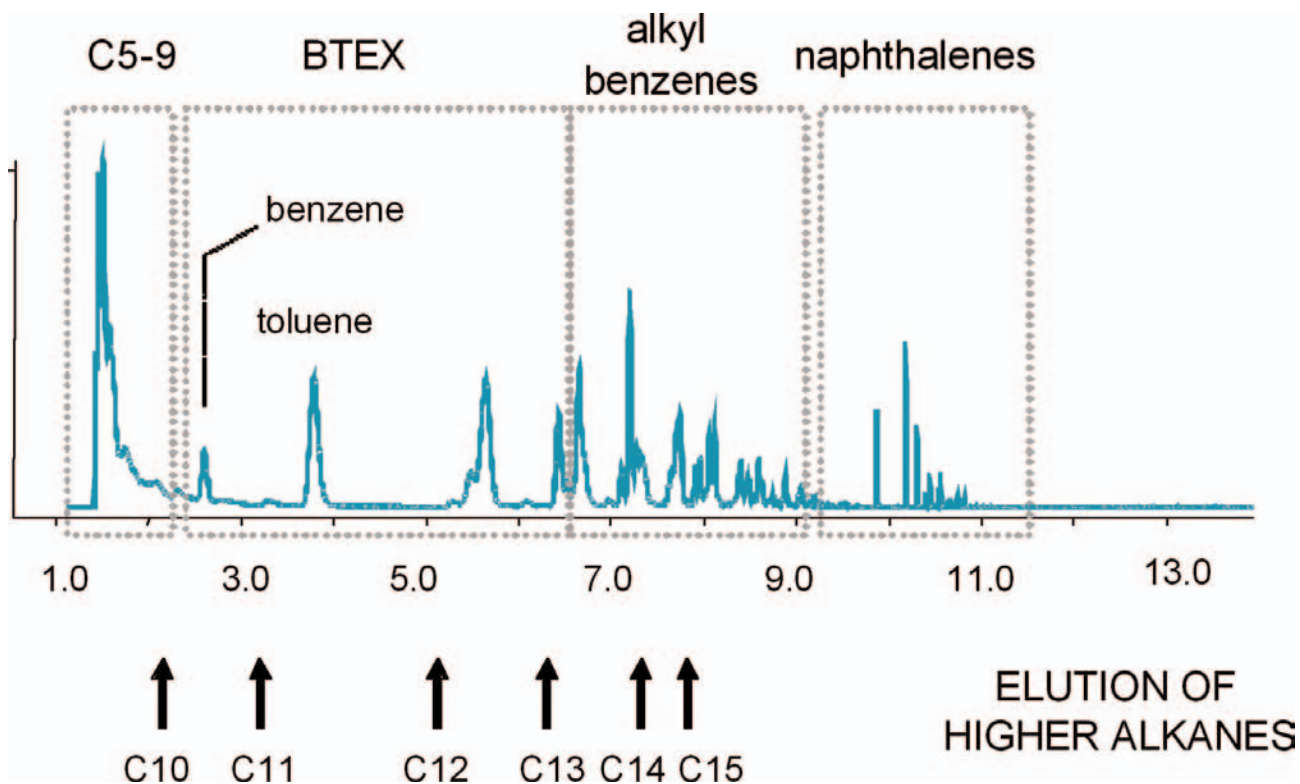


Figure 1: The separation of a petroleum sample using a BPX90 column (30m x 0.25mm, 250 micron film) showing the resolution of aromatic families and the separation from more abundant alkanes.

SGE International Pty. Ltd.  
Toll Free: 1800 800 167  
Tel: +61 (0) 3 9837 4200  
Fax: +61 (0) 3 9874 5672  
Email: support@sge.com

SGE Europe Ltd  
Tel: +44-1908 568 844  
Fax: +44-1908 566 790  
Email: uk@sge.com

SGE Europe Ltd  
Tel: +33 1 6929 8090  
Fax: +33 1 6929 0925  
Email: france@sge.com

SGE, Incorporated (USA)  
Toll Free: (800) 945 6154  
Tel: +1-512-837 7190  
Fax: +1-512-836 9159  
Email: usa@sge.com

SGE GmbH  
Tel: +49 6151 860486  
Fax: +49 6151 860489  
Email: germany@sge.com

SGE Japan Inc.  
Tel: +81 45 222 2885  
Fax: +81 45 222 2887  
Email: japan@sge.com

SGE India  
Tel: +91 (22) 2471 5896  
Fax: +91 (22) 2471 6592  
Email: sgeindia@vsnl.com

SGE China  
Tel: +86 (10) 6588 8666  
Fax: +86 (10) 6588 6577  
Email: sales@jjindustries.com.cn

SGE Gulf  
Tel: +971-6-557 3341  
Fax: +971-6-557 3541  
Email: gulfsupport@sge.com